

ILLUSTRATED PARTS BREAKDOWN

VAX 6200 SYSTEM

HOW TO USE THE IPB

GENERAL

This IPB is compiled following the organization and nomenclature of the engineering drawing structure.

MAJOR ASSEMBLY LOCATOR (When Applicable)

The Major Assembly Locator (first illustration) is an index that provides a description and a figure reference for all illustrations used in this manual.

INDENTED PARTS LIST

This manual identifies each assembly being broken down (figure reference callout) and all parts of that assembly. Further breakdown of an assembly is shown by an asterisk (*) preceding the item callouts in the Description Column. The number of asterisks preceding an item is used to denote the subordination of that item with respect to the Major Assembly. A single asterisk preceding an item description indicates that the item is part of the major assembly being illustrated. Items that are subordinate to single asterisks items are denoted by two asterisks (**) and immediately follow the related single asterisk item. This system of part identification provides a means for the user to identify the next higher assembly item and make alternate selections for parts when the required replacement part of assembly is not immediately available.

COLUMN CALLOUT DESCRIPTION

Figure and Item - indicates the figure number and item number of each part.

Description - Lists the name of the part and pertinent specifications (when required). Asterisks preceding the description denote the subordination of the part to the next higher assembly.

DEC Part No. - Lists the Digital part ordering number. A blank in this column indicates a Digital part number was not assigned at the time of publication.

ECO Cut-In - The notation at the top of this column indicates the ECO level of the system (option) at which the IPB was initially prepared. Subsequent ECO level designations that modify existing parts or add new parts to the device are inserted in the ECO Cut-In column next to the part that is added or modified.

Used On Code - Letters in this column correspond to the variation codes assigned in Figure 1. Parts with an Alpha notation(s) are used only in those option variations. A blank indicates that the part is used on all option variations.

Ref Fig No. - A cross reference between illustrations. For each Major Assembly, the number in this column denotes the figure of the next higher assembly. For all subassemblies, the number in this column denotes the figure showing additional detailed breakdown.

PART NUMBER PART DESCRIPTION SORT SECTION

Parts are sorted both numerically and alphabetically by description, referenced to a location within the IPB by figure number and item number.

REVISION HISTORY

REVISION HISTORY				OTHER IPB MANUALS REFERENCED
PRINTING	ECO LEVEL		DATE	
1st Printing	62AMB-Y	0000*-00001	28-APR-89	EK-07K50-IP
	62AMN-Y	00000-00000		
	70-24900	00000-00000		
	70-24614	00000-00000		
	70-24623	00000-00000		
	70-24124	00001-00001		
	H405	00004-00004		
	70-25506	00001-00001		
	70-25507	H405-00003		
	70-25505	00001-00001		
	70-24902	00000-00000		
	70-24126	00000-00000		
	H7206	H7206-00002		
	70-24903	00002-00002		
	H7215	00001-00001		
	H7214	00002-00002		

Digital Equipment Corporation reserves the right, without notice, to make substitutions and modifications in the specifications of products documented in this manual and further reserves the right to withdraw any of these products from the market without notice.

Digital Equipment Corporation is not responsible for errors which may appear in the technical description (including illustrations and photographs) of the products covered by this manual.

None of the descriptions contained in this manual imply the granting of any license whatsoever to make, use or sell equipment constructed in accordance therewith.

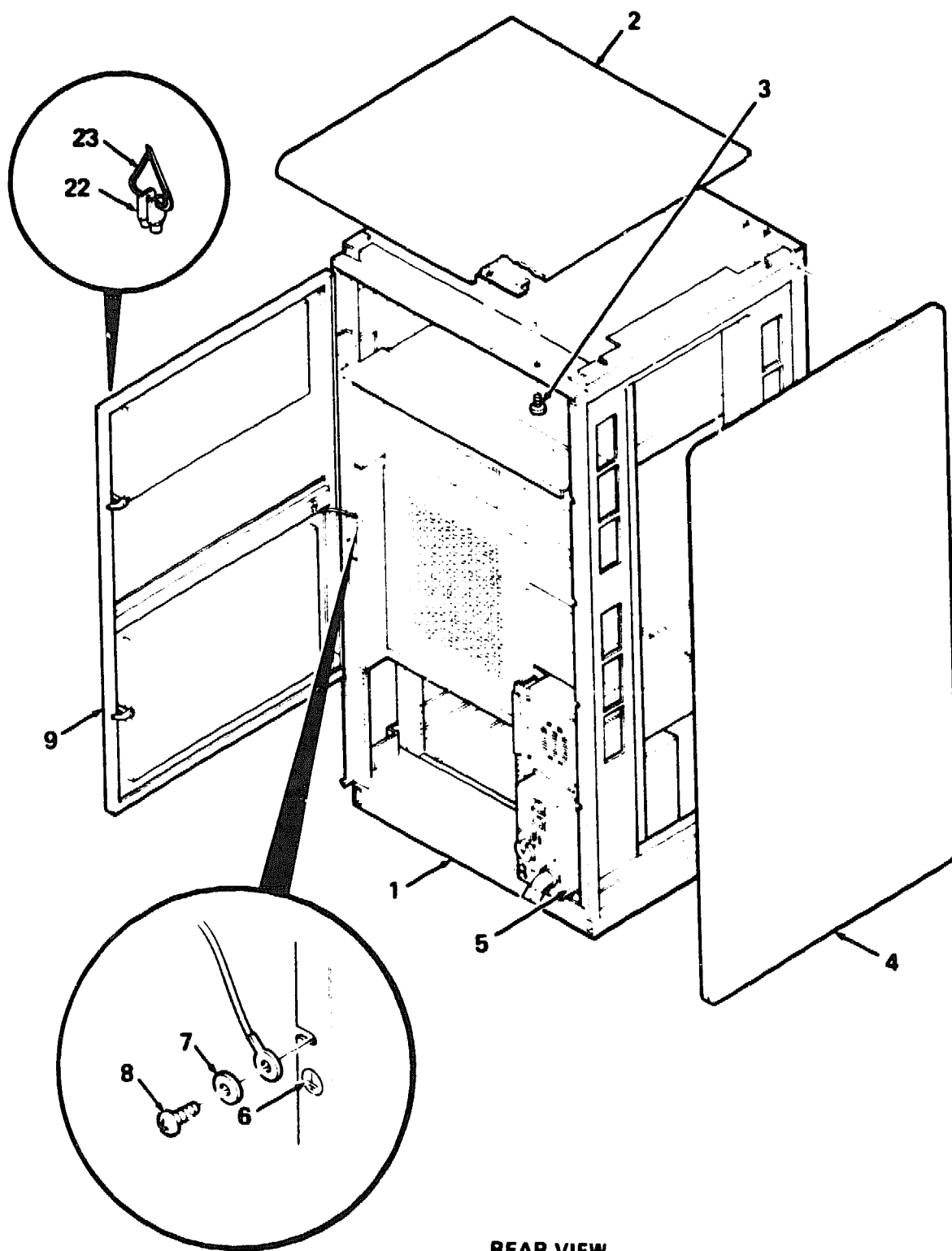
Copyright © 1989 by Digital Equipment Corporation. All rights reserved.

The postage-paid **READER'S COMMENTS** form on the last page of this document requests your critical evaluation to assist us in preparing future documentation.

The following are trademarks of Digital Equipment Corporation :

The logo consists of the word "digital" in a lowercase, sans-serif font, with a small "TM" trademark symbol to its upper right. The letters are white and set against a black rectangular background.

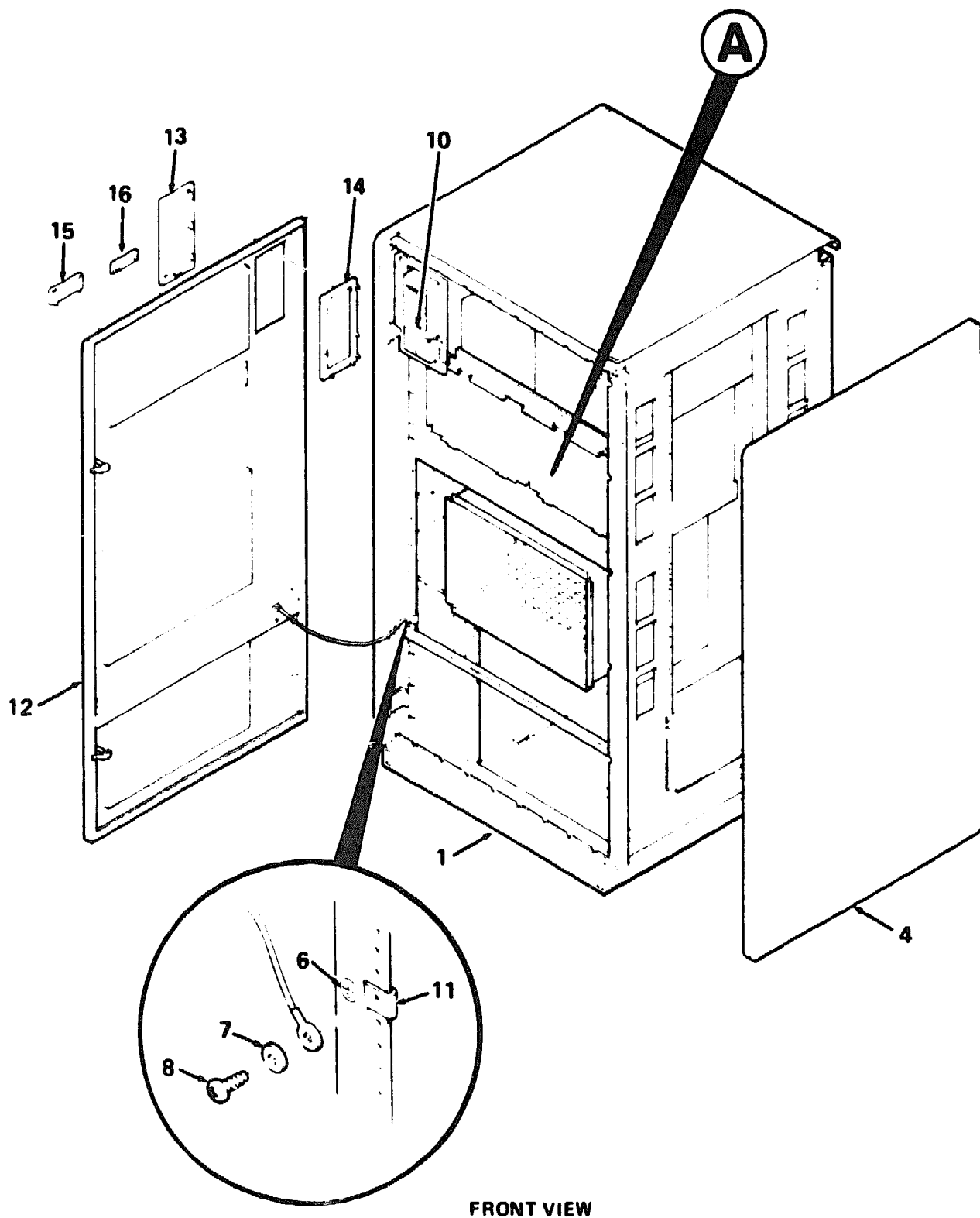
DEC
DECUS
PDP
TK50
UNIBUS
VAX
VAX 6200
VAXserver 6200



REAR VIEW

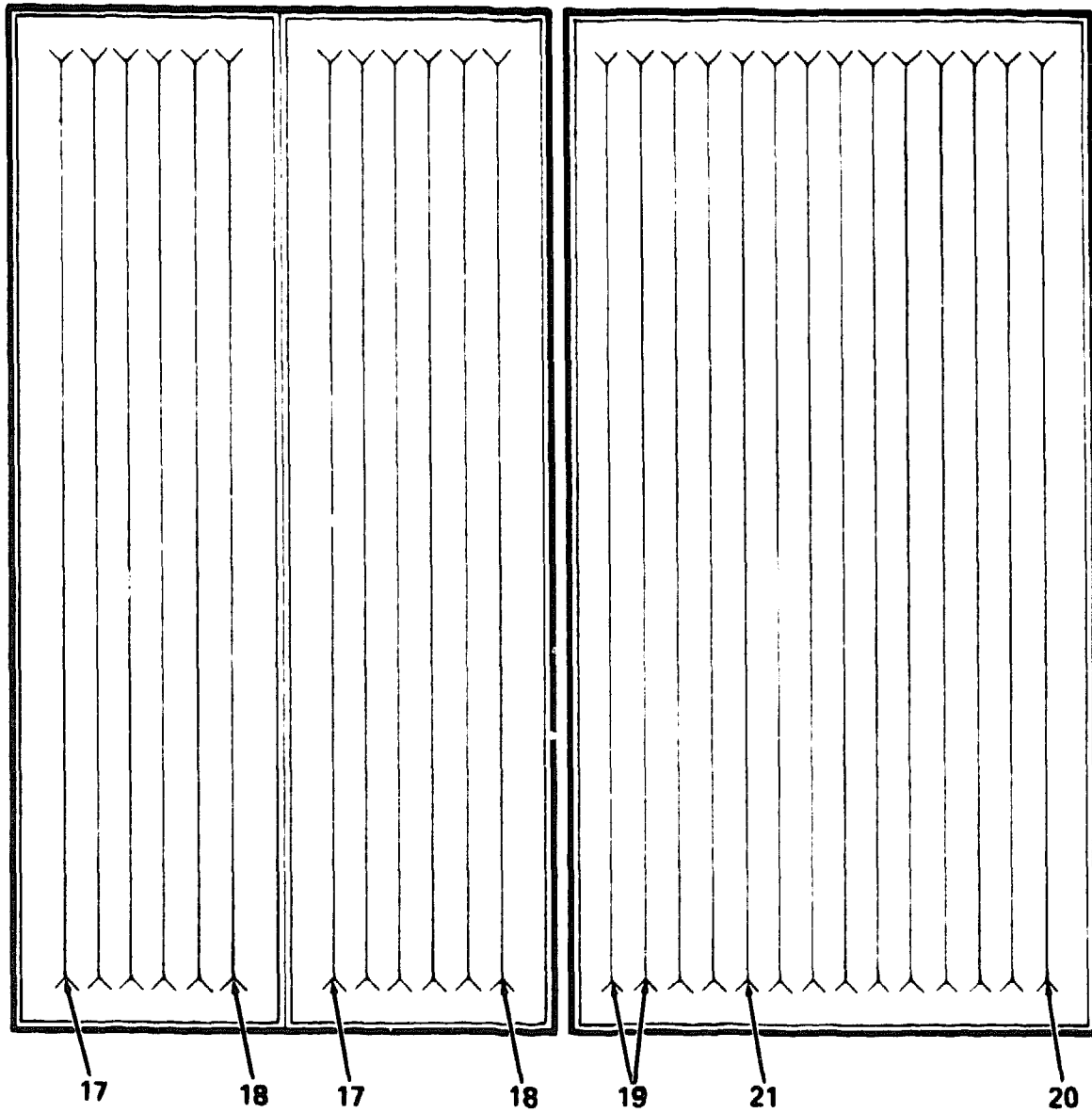
6200X-01-BD

Figure 1. VAX 6200 System Assembly (2BI) (Sheet 1 of 3)



6200X-01A-BD

Figure 1. VAX 6200 System Assembly (2BI) (Sheet 2 of 3)

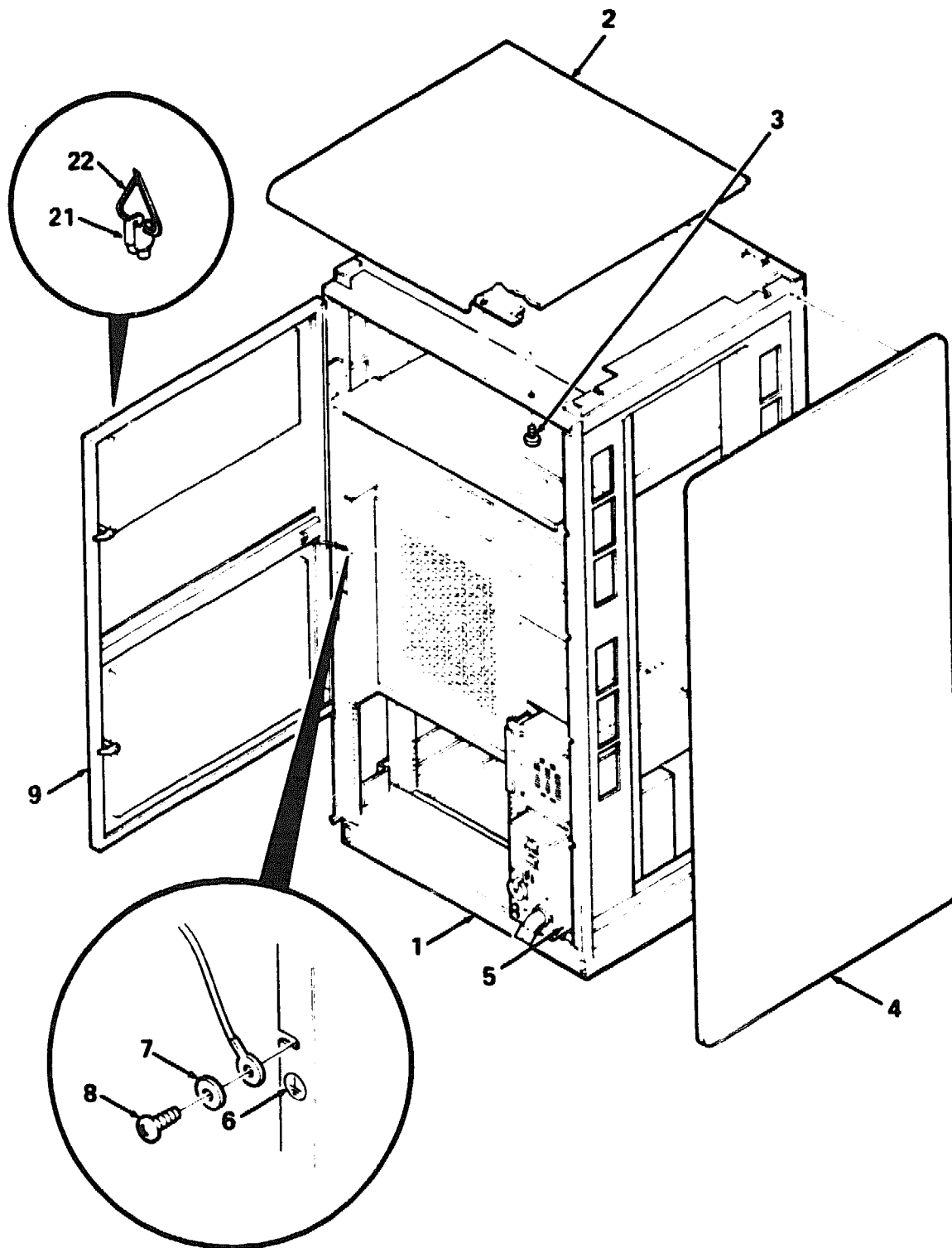


A

6200X-01B-BD

Figure 1. VAX 6200 System Assembly (2BI) (Sheet 3 of 3)

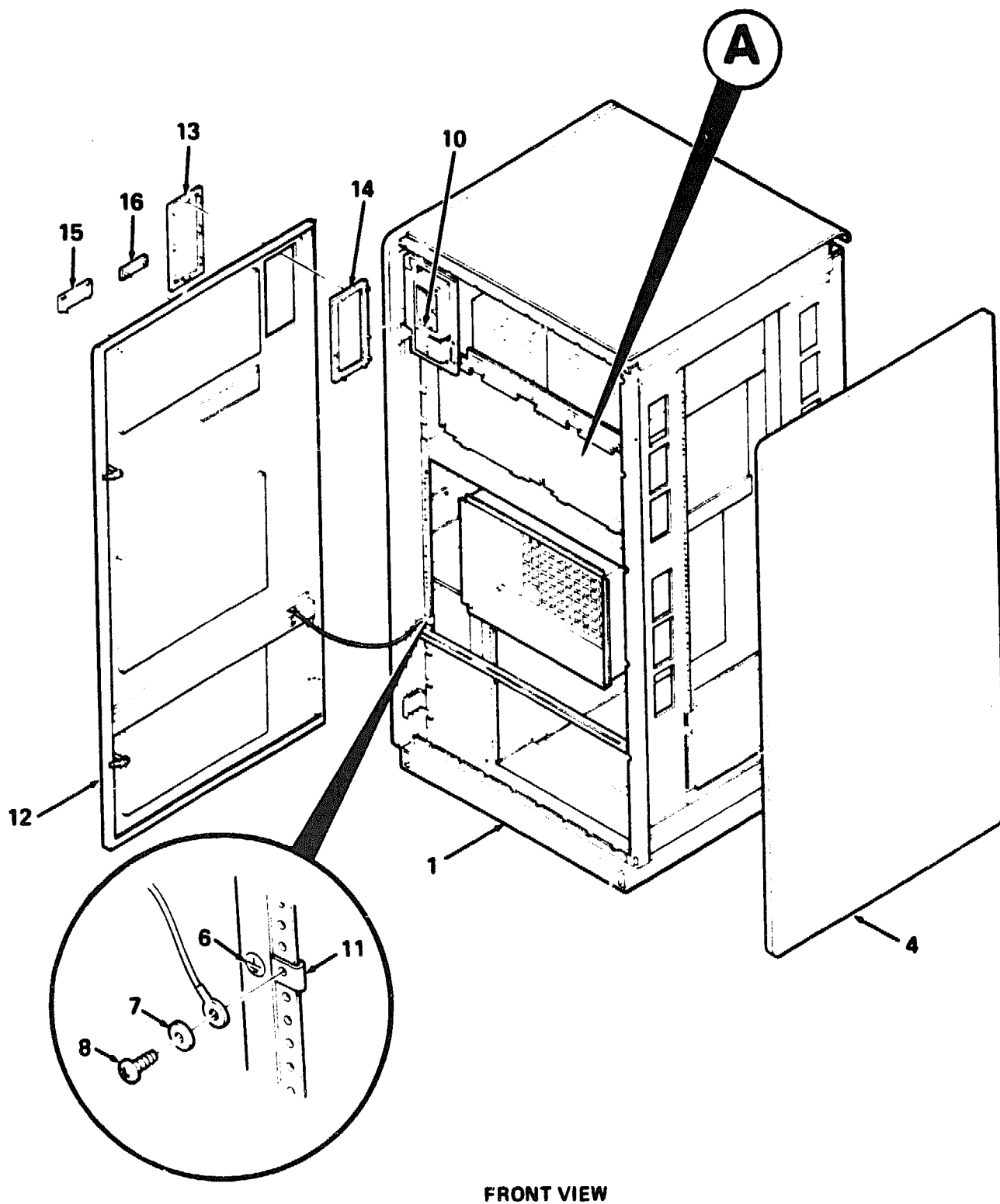
FIG. & ITEM NO.	DESCRIPTION	^B DEC PART NO.	ECO CUT-IN 62AMB-Y 00001	USED ON CODE	REF FIG NO.
1-	VAX 6200 SYSTEM ASSEMBLY (2BI)				
	Code A-Used on 62AMB-YE (120V)	62AMB-YE		A	
	Code B-Used on 62AMB-YJ (240V)	62AMB-YJ		B	
1	*POWER & PACKAGING ASSEMBLY(14 Slot,120V)	70-24900-01		A	2
	*POWER & PACKAGING ASSEMBLY(14 Slot,240V)	70-24900-02		B	2
2	*Cover, Top Weldment	70-23397-01			
3	*Screw, Self-Tap Truss Hd No. 10-32 x 1/2	90-00063-39			
4	*Panel Assembly, End	70-19485-01			
5	*Nut, Kep No. 1/4-20	90-08203-00			
6	*Label, "Ground"	36-12680-02			
7	*Washer, Flat	90-06664-00			
8	*Screw, Phi Pan Hd No. 10-32 x 5/8	90-00063-41			
9	*DOOR ASSEMBLY, REAR	70-24124-01			5
10	*Tape Drive (See IPB Manual EK-0TK50-IP)	TK50-AA			
11	*Retainer, U-Nut No. 10-32	90-07786-00			
12	*DOOR ASSEMBLY, FRONT	70-24623-01			4
13	*Bezel	74-35369-01			
14	*Retainer, Bezel	74-35370-01			
15	*Slug, VAX Name Plate	74-36257-01			
16	*Logo, Corporate	74-31616-02			
17	*Module, NI Adapter w/TK50 Controller	T1034-00			
18	*Module, XMI to BI Adapter (XBIB)	T1043-00			
19	*Module, XMI to BI Adapter (XBIA)	T2012-00			
20	*Module, CPU	KA62A-AA			
21	*Module, 32MB	KA62A-AB			
22	*Keys, Plastic	12-17119-01			
23	*Tie, Cable	90-07880-00			
	LABELS (Not Shown)				
	*Label, "Warning"	36-27020-01			
	*Label, "System Electrical Data 120V"	36-25189-02		A	
	*Label, "System Electrical Data 240V"	36-25189-01		B	
	*Label, "Direct Thermal"	36-28231-08			
	*Label, "FCC Class A Processor"	36-17880-02		A	
	*Label, "Assembly"	36-18307-05		A	
	*Label, "PTT Approval"	36-25988-02		B	
	LOOSE PIECE PARTS (Shipped Separate)				
	*Key, Cabinet	12-26339-01			
	*Connector Assembly, D Sub 15 Pin	12-22196-02			
	*Cable Assembly, Molded Shielded 25 Pin	17-00313-02			
	*Panel, Double Sub	74-26407-01			
	CABLE (Not Shown)				
	*Cable Assembly, Flat (K1J13 to K3J1)	17-01897-03			



REAR VIEW

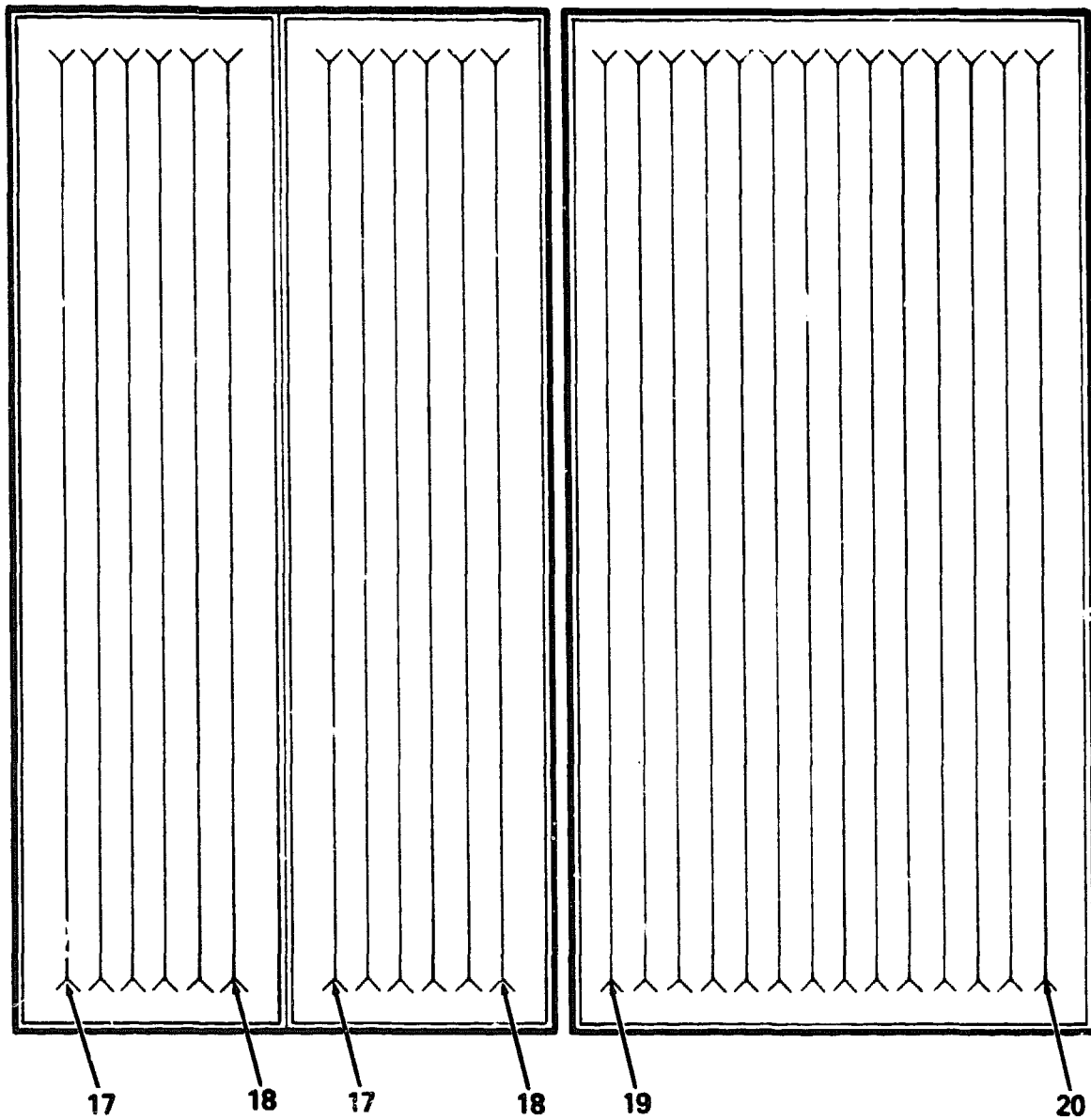
6200X-01C-BD

Figure 1A. VAXserver System Assembly (2BI) (Sheet 1 of 3)



6200X-01D-BD

Figure 1A. VAXserver System Assembly (2BI) (Sheet 2 of 3)

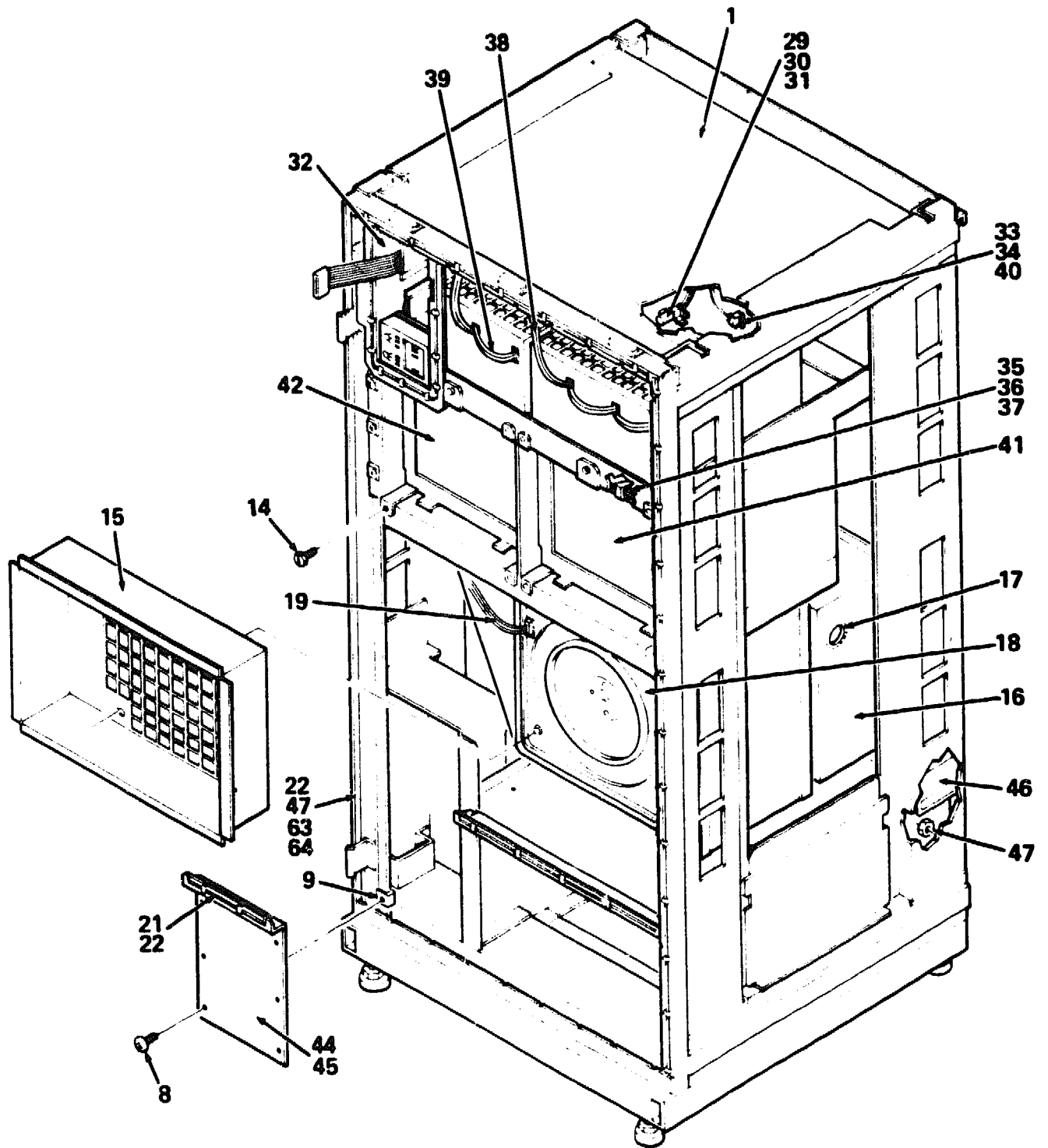


A

6200X-01E-BD

Figure 1A. VAXserver System Assembly (2BI) (Sheet 3 of 3)

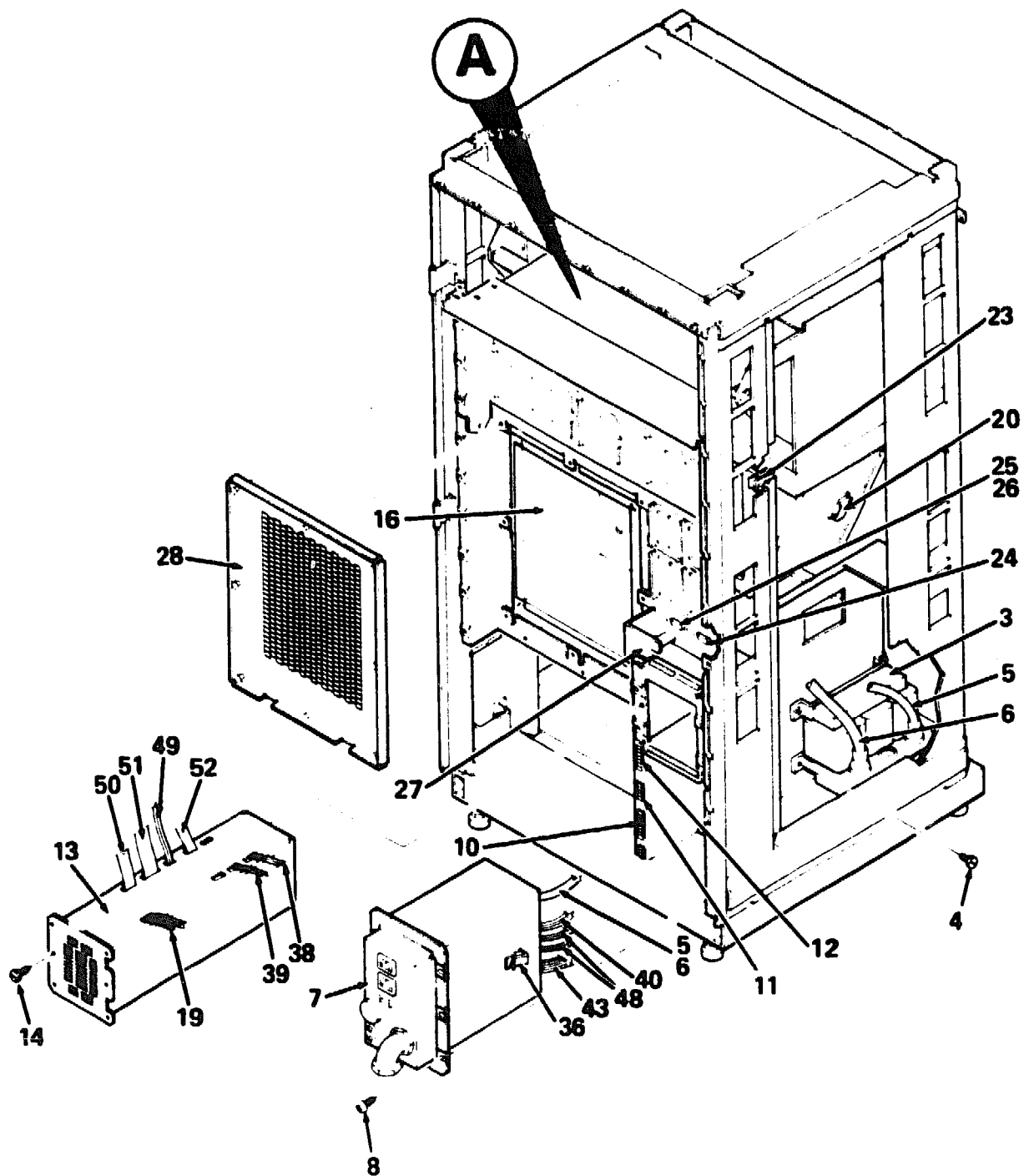
FIG. & ITEM NO.	DESCRIPTION	A DEC PART NO.	ECO CUT-IN 62AMN-Y 00000	USED ON CODE	REF FIG NO.
1A-	VAXserver 6200 SYSTEM ASSEMBLY (2BI)				
	Code C-Used on 62AMN-YE (208V)	62AMN-YE		C	
	Code D-Used on 62AMN-YJ (380/415V)	62AMN-YJ		D	
1	*POWER & PACKAGING ASSEMBLY(14 Slot,120V)	70-24900-01		C	2
	*POWER & PACKAGING ASSEMBLY(14 Slot,240V)	70-24900-02		D	2
2	*Cover, Top Weldment	70-23397-01			
3	*Screw, Self-Tap Truss Hd No. 10-32 x 1/2	90-00063-39			
4	*Panel Assembly, End	70-19485-01			
5	*Nut, Kep No. 1/4-20	90-08203-00			
6	*Label, "Ground"	36-12680-02			
7	*Washer, Flat	90-06664-00			
8	*Screw, Phi Pan Hd No. 10-32 x 5/8	90-00063-41			
9	*DOOR ASSEMBLY, REAR	70-24124-01			5
10	*Tape Drive (See IPB Manual EK-0TK50-IP)	TK50-AA			
11	*Retainer, U-Nut No. 10-32	90-07786-00			
12	*DOOR ASSEMBLY, FRONT	70-24623-01			4
13	*Bezel	74-35369-01			
14	*Retainer, Bezel	74-35370-01			
15	*Slug, VAX Name Plate	74-36257-02			
16	*Logo, Corporate	74-31616-02			
17	*Module, NI Adapter w/TK50 Controller	T1034-00			
18	*Module, XMI to BI Adapter (XBIB)	T1043-00			
19	*Module, XMI to BI Adapter (XBIA)	T2012-00			
20	*Module, CPU	KA62A-AB			
21	*Keys, Plastic	12-17119-01			
22	*Tie, Cable	90-07880-00			
	LABELS (Not Shown)				
	*Label, "Warning"	36-27020-01			
	*Label, "System Electrical Data 120V"	36-25189-02		C	
	*Label, "System Electrical Data 240V"	36-25189-01		D	
	*Label, "Direct Thermal"	36-28231-08			
	*Label, "FCC Class A Processor"	36-17880-02		C	
	*Label, "Assembly"	36-18307-05		C	
	*Label, "PTT Approval"	36-25988-02		D	
	LOOSE PIECE PARTS (Shipped Seperate)				
	*Key, Cabinet	12-26339-01			
	*Connector Assembly, D Sub 15 Pin	12-22196-02			
	*Panel, Double Sub	74-26407-01			
	*Cable Assembly, Molded Shielded 25 Pin	17-00313-02			
	CABLE (Not Shown)				
	*Cable Assembly, Flat (K1J13 to K3J1)	17-01897-03			



FRONT VIEW

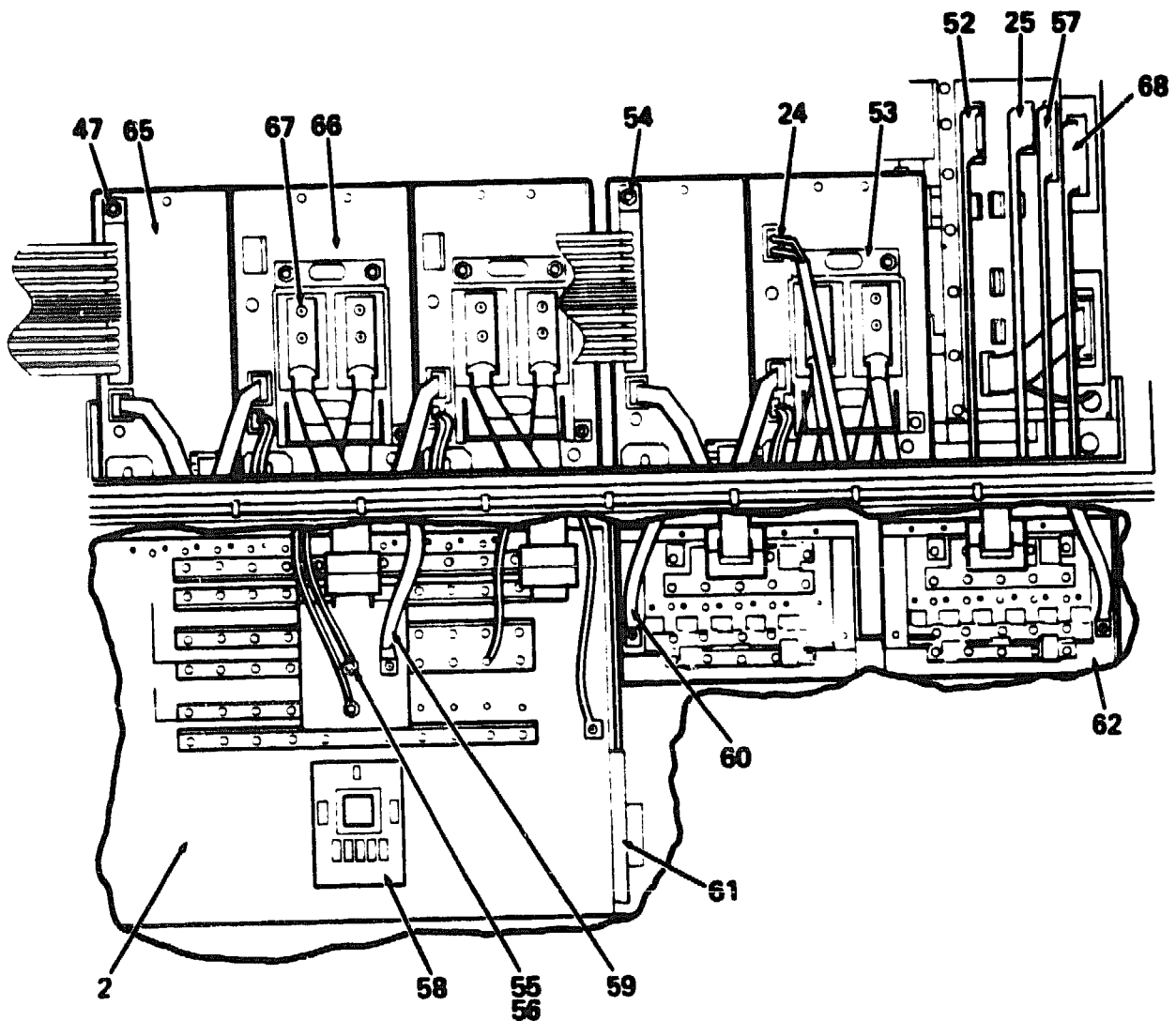
6200X-02-BD

Figure 2. Power And Packaging Assembly (Sheet 1 of 3)



6200X-02A-BD

Figure 2. Power And Packaging Assembly (Sheet 2 of 3)



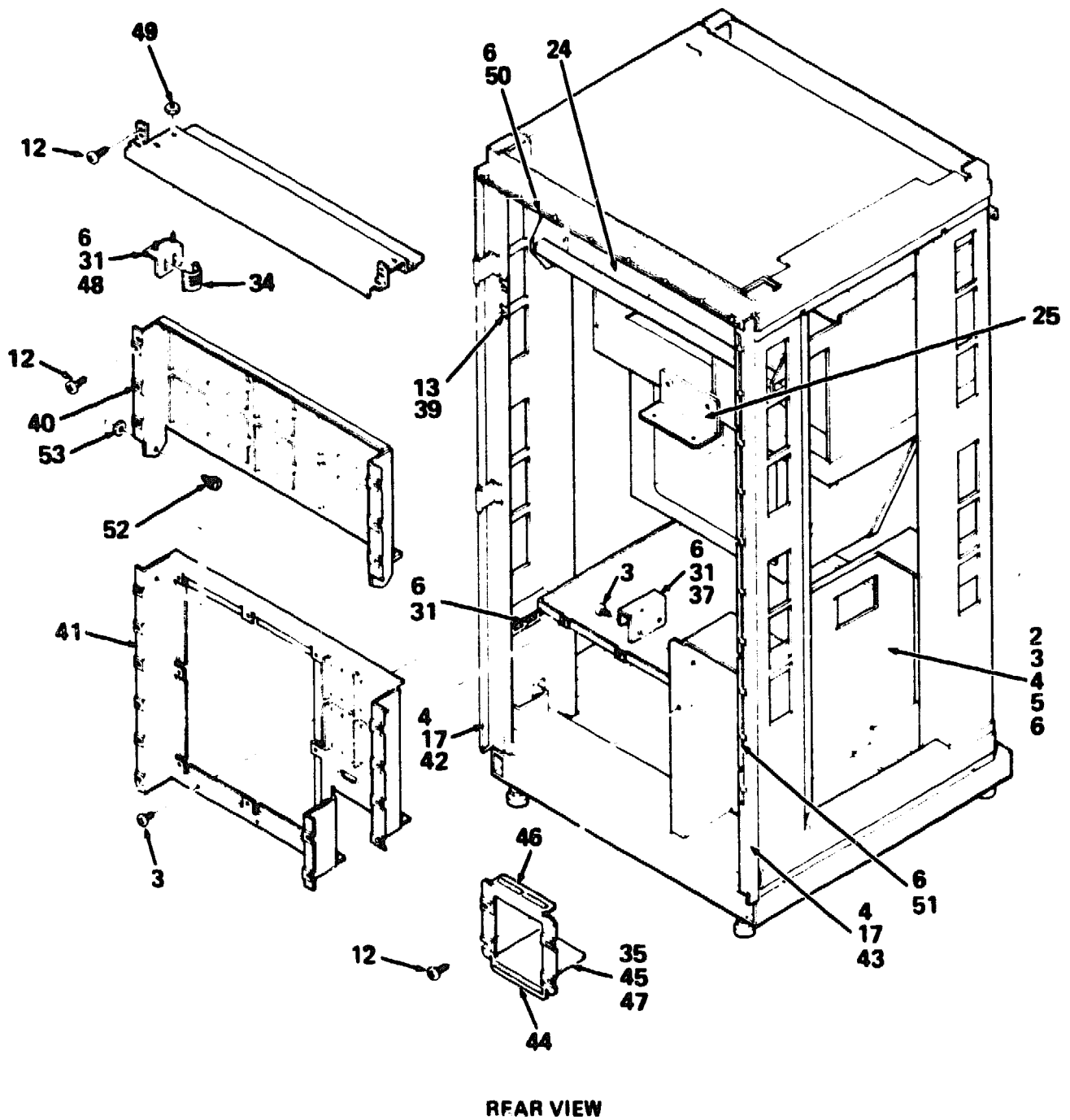
(A)

6200X-02B-BD

Figure 2. Power And Packaging Assembly (Sheet 3 of 3)

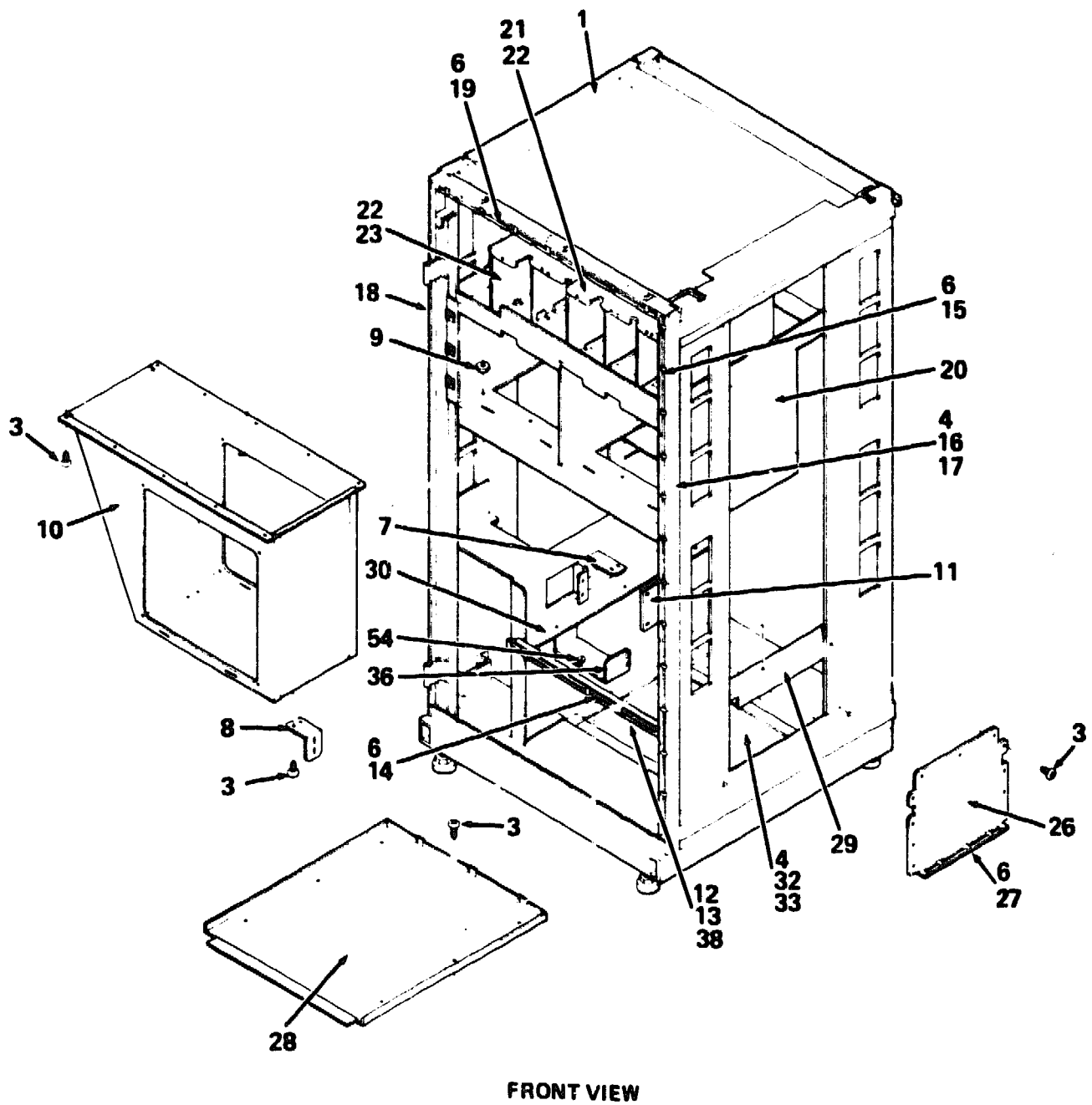
FIG.& ITEM NO.	DESCRIPTION	A DEC PART NO.	ECO CUT-IN 70-24900 00000	USED ON CODE	REF FIG NO.
2-	POWER AND PACKAGING ASSEMBLY (120V)	70-24900-01		AC	1.1A
	POWER AND PACKAGING ASSEMBLY (240V)	70-24900-02		BD	1.1A
1	*CABINET ASSEMBLY, MECHANICAL	70-24614-01			3
2	*BUS BAR ASSEMBLY, XMI	70-24902-01			10
3	*Transformer, 3-Phase P=416 50 Hz 4.5 KVA	16-28393-01		BD	
4	*Screw, Sems Hex Hd No. 1/4-20 x 1/2	90-09988-00		BD	
5	*Harness Assembly, Wire	17-01501-01			
6	*Harness Assembly	17-01815-01			
7	*POWER BUS OUTPUT ASSEMBLY (120V)	H405-E		AC	6
	*POWER BUS OUTPUT ASSEMBLY (240V)	H405-F		BD	6
8	*Screw, Self-Tap Truss Hd No. 10-32 x 1/2	90-00063-39			
9	*Retainer, U-Nut No. 10-32	90-07786-00			
10	*Gasket, RFI Shield	12-28686-17			
11	*Gasket, RFI Shield	12-28686-16			
12	*Gasket, RFI Shield	12-28686-14			
13	*POWER/LOGIC BOX ASSEMBLY	H7206-A			12
14	*Screw, Sems Hex Hd No. 8-32 x 3/8	90-09988-08			
15	*Extension Assembly, Front	70-24612-01			
16	*Extension Assembly, Rear	70-24613-01			
17	*Grommet	12-25469-01			
18	*Blower, Backward 24 VDC	12-27848-01			
19	*Harness Assembly, Wire 9 Cond	17-01570-01			
20	*Clip, Flat Cable	12-15843-01			
21	*Gasket Assembly	70-19605-02			
22	*Clip, Nylon For RF Gasket	12-21535-01			
23	*Clip, Flat Cable	12-15843-03			
24	*Cable Assembly, 6 Cond	17-01496-01			
25	*Cable Assembly, 4 Cond	17-01567-01			
26	*Screw Assembly, Lock	90-08451-00			
27	*Weldment, Cable Guide	70-25525-01			
28	*Panel, I/O Blower	74-35004-01			
29	*Bracket, Front Sensor	74-34752-01			
30	*Sensor, Air Flow Temp	12-25024-11			
31	*Tie, Cable	90-07031-00			
32	*CONTROL ASSEMBLY, SYSTEM	70-24903-01			13
33	*Bracket, Mounting	90-10624-01			
34	*Screw, Sems Phi Pan Hd No. 6-32 x 5/16	90-09984-07			
35	*Harness Assembly, Wire	17-01499-01			
36	*Clamp, Cable	90-09636-00			
37	*Nut, Kep No. 4-40	90-06557-00			
38	*Harness Assembly, Wire 6 Cond	17-01446-01			
39	*Harness Assembly, Wire 4 Cond	17-01447-01			
40	*Harness Assembly, Wire 4 Cond	17-01844-01			
41	*Cover Assembly, XMI Card Cage	70-24390-01			
42	*Cover Assembly, BI Card Cage	70-24389-01			
43	*Harness Assembly, 5 Cond	17-01549-01			
44	*Panel, Front	74-35215-01		AC	

FIG. & ITEM NO.	DESCRIPTION	A DEC PART NO.	ECO CUT-IN 70-24900 00000	USED ON CODE	REF FIG NO.
2-					
45	*Panel, Front	74-35215-02		BD	
46	*Cable Assembly, W/Wrist Strap	12-24023-01			
47	*Nut, Kep No. 6-32	90-06560-00			
48	*Harness Assembly, Wire 4 Cond 2 Pin	17-01833-01			
49	*Harness Assembly, Wire 4 Cond 10Pin	17-01569-01			
50	*Cable Assembly, Flat 34 Cond	17-01666-01			
51	*Cable Assembly, Flat 34 Cond	17-01497-02			
52	*Cable Assembly, Flat 34 Cond	17-01498-01			
53	*Cover, 6 Watt Regulator	74-35974-01			
54	*Bracket	74-35973-01			
55	*Washer, Flat	90-06660-00			
56	*Nut, Kep No. 8-32	90-06563-00			
57	*Cable Assembly, 20 Cond	17-01568-02			
58	*Module, Clock Arbiter	54-18172-01			
59	*Harness Assembly, Wire	17-01662-01			
60	*Harness Assembly, Wire	17-01458-01			
61	*Grommet, Strip	90-09718-00			
62	*CARD CAGE ASSEMBLY, DUAL BI	70-24126-01			11
63	*Bracket, Filler Angle Seal	74-35919-01			
64	*Gasket Assembly	70-19605-01			
65	*REGULATOR ASSEMBLY, 300 WATTS	H7215-A			14
66	*REGULATOR ASSEMBLY, 600 WATTS	H7214-A			15
67	*Screw, Sems Truss Phi Hd No. 10-32 x 1.2	90-00049-04			
68	*Harness Assembly, Wire 26 Cond	17-01814-01			
	LABELS (Not Shown)				
	*Label, "Bar Code"	36-22147-06			
	*Label, "Control Panel	36-23595-02		AC	
	*Label, "Control Panel"	36-23595-02		BD	
	*Label, "Ground Symbol"	36-12680-02			
	*Label, "Serial/ Power"	36-17674-00			
	CABLES/JUMPERS (Not Shown)				
	*Cable Assembly, Flat	17-01897-02			
	*Cable Assembly, Flat Ribbon	17-00849-08			
	*Jumper Assembly	17-01149-01			



6200X-03-BD

Figure 3. Cabinet Assembly. Mechanical (Sheet 1 of 2)

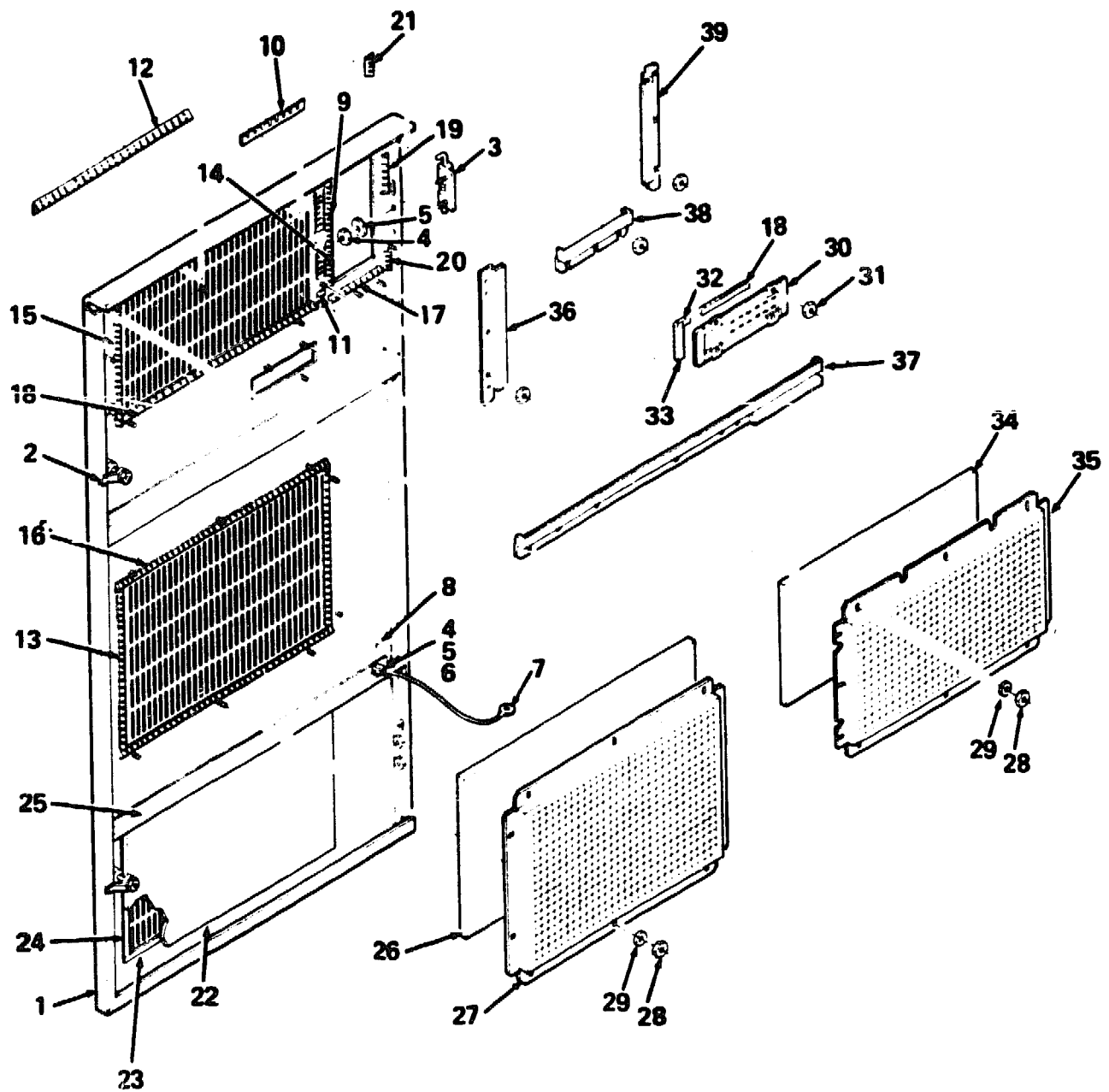


6200X-03A-BD

Figure 3. Cabinet Assembly, Mechanical (Sheet 2 of 2)

FIG.& ITEM NO.	DESCRIPTION	A DEC PART NO.	ECO CUT-IN 70-24614 00000	USED ON CODE	REF FIG NO.
3-	CABINET ASSEMBLY, MECHANICAL	70-24614-01			2
1	*Frame Assembly, 1.5 Bay	70-24742-02			
2	*Rail, Third Support	74-34756-01			
3	*Screw, Sems Truss Phi Hd No. 10-32 x 3/4	90-00049-04			
4	*Screw, Sems Hex Hd No. 1/4-20 x 1/2	90-09988-00			
5	*Gasket Assembly	70-19605-06			
6	*Clip, Nylon For RF Gasket	12-21535-01			
7	*Bracket, Blower Structure (LH)	74-35050-01			
8	*Bracket, Blower Structure (RH)	74-35049-01			
9	*Nut, Kep No. 10-32	90-06565-00			
10	*Structure Assembly, Blower	70-24611-01			
11	*Bracket, Front Extension	74-35834-01			
12	*Screw, Thread Rolling Pan Hd No. 10 x 1/2	90-00063-39			
13	*Nut, Retainer No.10-32	90-07786-00			
14	*Gasket Assembly	70-19605-08			
15	*Gasket Assembly	70-19605-26			
16	*Seal, Front Angle Single	74-35039-01			
17	*Nut, Kep No. 1/4-20	90-08203-00			
18	*Seal, Angle Weldment	70-24621-01			
19	*Gasket Assembly	70-19605-11			
20	*Weldment, Cage	70-24410-01			
21	*Weldment, Chassis (XMI)	70-24615-01			
22	*Rivet	90-00030-01			
23	*Weldment, Chassis (BI)	70-24616-01			
24	*Tube, Weldment	70-24391-01			
25	*Bracket, Rear Extension	74-35835-01			
26	*Panel (RH)	74-34410-10			
27	*Gasket Assembly	70-19605-04			
28	*Tray Assembly	70-24136-01			
29	*Bracket (RH)	74-34409-01			
30	*Bracket (LH)	74-34408-01			
31	*Gasket Assembly	70-19605-30			
32	*Screen, Bottom	74-33015-01			
33	*Rivet	90-00030-21			
34	*Shield, Spring	74-26925-01			
35	*Plate, H7206 Mounting	74-34982-01			
36	*Support, H7206 Rear	74-34110-01			
37	*Bracket, Filler	74-35160-01			
38	*Seal, Front	74-35214-01			
39	*Plane Assembly, Ground	70-24409-01			
40	*Frame Assembly, Full Width Hinged	70-24618-01			
41	*I/O Assembly, Lower	70-24610-01			
42	*Weldment, Rear Switch Angle Seal	70-19581-02			

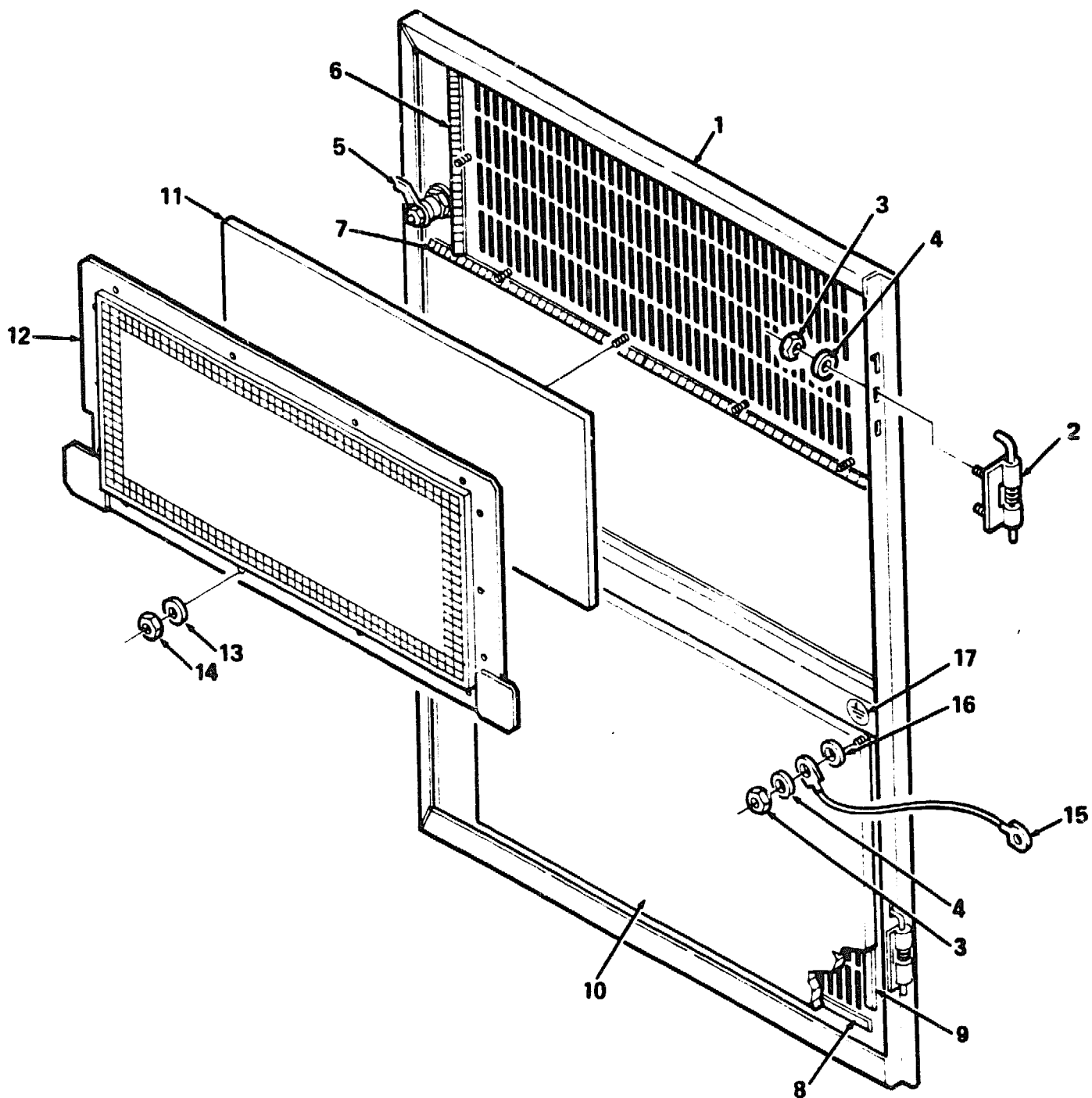
FIG. & ITEM NO.	DESCRIPTION	^A DEC PART NO.	ECO CUT-IN 70-24624 00000	USED ON CODE	REF FIG NO.
3-					
43	*Seal, Rear Single Angle	74-26638-01			
44	*Gasket, RFI Shield	12-28686-07			
45	*Gasket, RFI Shield	12-28686-10			
46	*Gasket, RFI Shield	12-28685-01			
47	*Gasket, RFI Shield	12-28686-11			
48	*Bracket, Hinged I/O Ground	74-35161-01			
49	*Nut, Kep No. 6-32	90-06560-00			
50	*Gasket Assembly	70-19605-13			
51	*Gasket Assembly	70-19605-20			
52	*Screw, Shoulder No. 10-32 X 1/8	12-27250-01			
53	*Washer, Flat Nylon	90-06709-00			
54	*Key, Button	74-14318-00			



6200X-04-BD

Figure 4. Door Assembly, Front

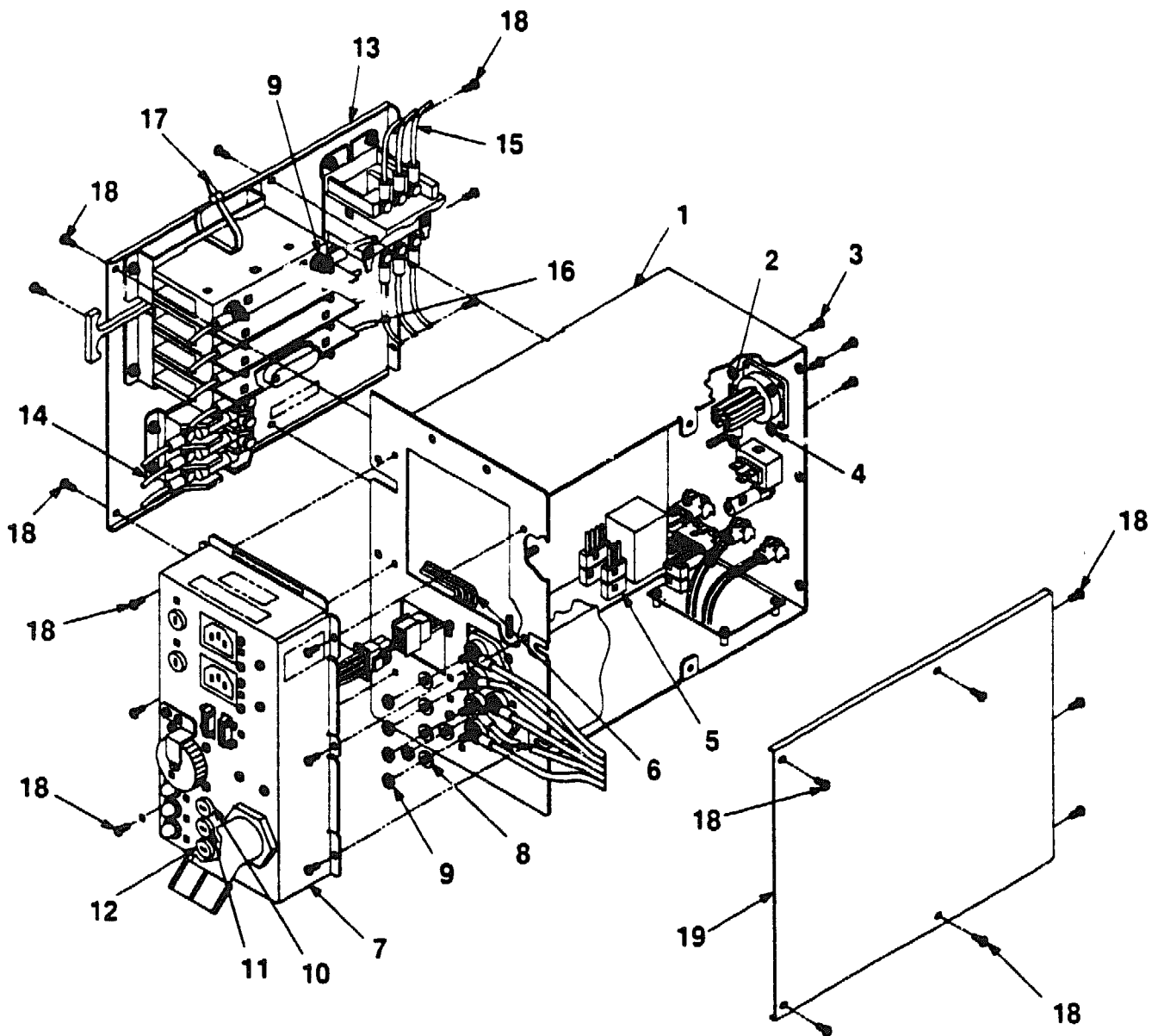
FIG. & ITEM NO.	DESCRIPTION	A DEC PART NO.	ECO CUT-IN 70-24623 00000	USED ON CODE	REF FIG NO.
4--	DOOR ASSEMBLY, FRONT	70-24623-01			1,1A
1	*Weldment, Front Door	70-24622-01			
2	*Latch, Turn-Grip	12-24095-01			
3	*Hinge Assembly (LH)	12-20203-01			
4	*Nut, Kep No. 10-32	90-06565-00			
5	*Washer, Flat	90-06664-00			
6	*Washer, External Lock	90-07651-00			
7	*Strap, Ground	12-13756-07			
8	*Label, "Ground"	36-13272-00			
9	*Strip, Contact 2.66 Inches Long	12-28434-06			
10	*Strip, Contact 3.465 inches Long	12-28434-07			
11	*Strip, Contact 0.465 Inches Long	12-28434-08			
12	*Gasket, RFI Shield	12-28686-02			
13	*Gasket, RFI Shield	12-28686-03			
14	*Gasket, RFI Shield	12-28686-04			
15	*Gasket, RFI Shield	12-28686-05			
16	*Gasket, RFI Shield	12-28686-06			
17	*Gasket, RFI Shield	12-28686-07			
18	*Gasket, RFI Shield	12-28686-08			
19	*Gasket, RFI Shield	12-28686-09			
20	*Gasket, RFI Shield	12-28686-10			
21	*Gasket, RFI Shield	12-28686-11			
22	*Filter, Foam Air	12-11255-25			
23	*Strip	74-13707-01			
24	*Strip	74-13707-00			
25	*Stiffener, Horizontal	74-35042-01			
26	*Filter, Foam Air	12-11255-24			
27	*Cover, Inlet	74-35887-01			
28	*Nut, Kep No. 8-32	90-06563-00			
29	*Washer, Flat	90-06660-00			
30	*Carrier	74-36554-01			
31	*Nut, Kep No. 6-32	90-06560-00			
32	*Gasket, RFI Shield	12-28686-13			
33	*Gasket, RFI Shield	12-28686-14			
34	*Filter, Foam Air	12-11255-23			
35	*Cover, Exhaust	74-35881-01			
36	*Seal, Left Exhaust	74-35845-01			
37	*Seal, Top Exhaust	74-35844-01			
38	*Seal, Bottom Exhaust	74-35846-01			
39	*Seal, Right Exhaust	74-35843-01			



6200X-05-BD

Figure 5. Door Assembly, Rear

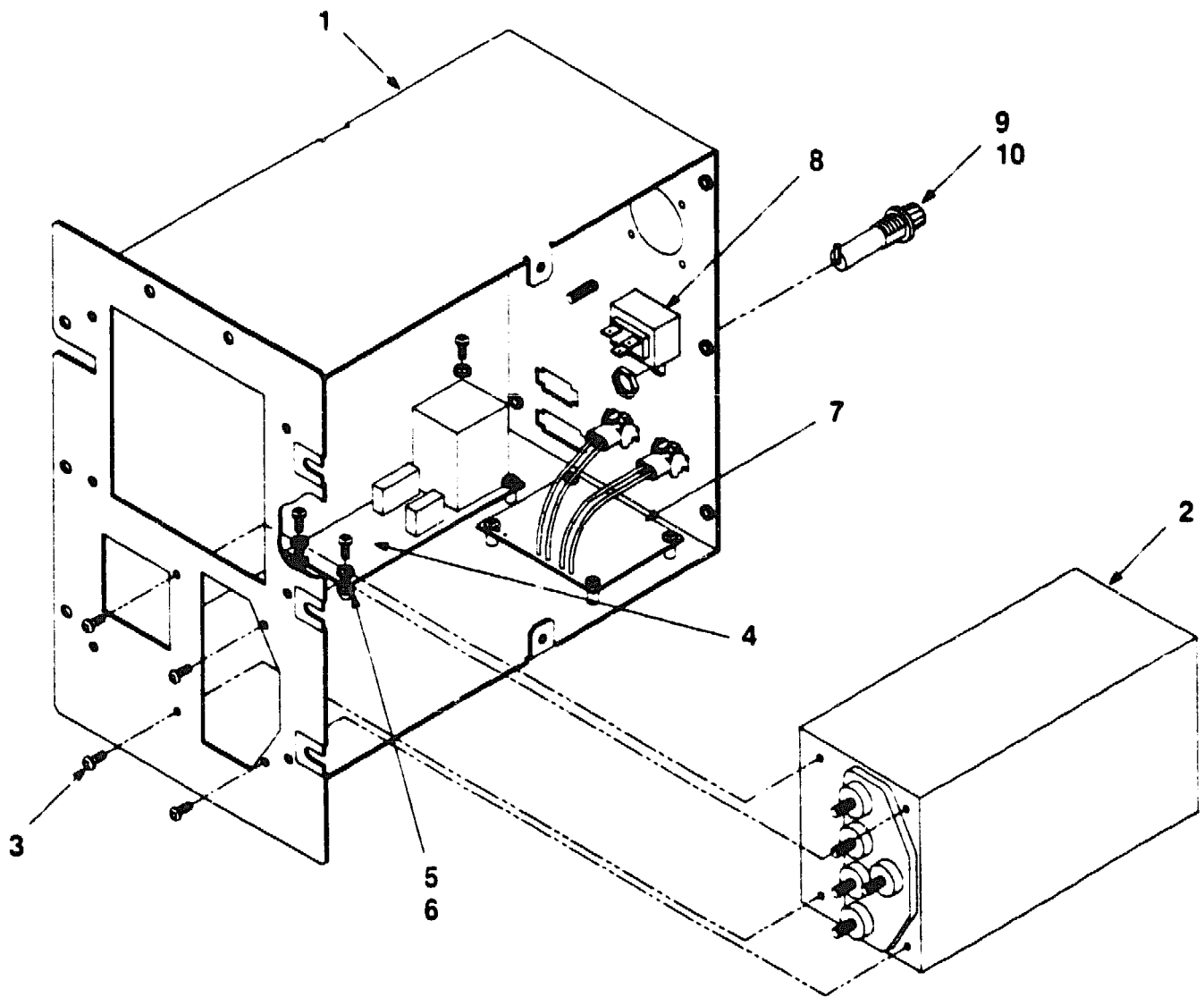
FIG. & ITEM NO.	DESCRIPTION	^B DEC PART NO.	ECO CUT-IN 70-24124 00001	USED ON CODE	REF FIG NO.
5-	DOOR ASSEMBLY, REAR	70-24124-01			1,1A
1	*Weldment, Rear Door	70-24125-01			
2	*Hinge, Pull (LH)	12-20203-01			
3	*Nut, Kep No. 10-32	90-06565-00			
4	*Washer, Flat	90-06664-00			
5	*Latch, Turn-Grip	12-24095-01			
6	*Gasket, BECU	12-28686-12			
7	*Shield, RFI	12-28686-02			
8	*Strip	74-13707-03			
9	*Strip	74-13707-07			
10	*Filter, Foam Air	12-11255-17			
11	*Filter, Foam Air	12-11255-22			
12	*Cover, Rear	70-24934-01			
13	*Washer, Flat	90-06660-00			
14	*Nut, Kep No. 8-32	90-06563-00			
15	*Strap, Ground	12-13756-09			
16	*Washer, External Tooth Lock	90-07651-00			
17	*Label, "Ground"	36-13272-00			



6200X-06-IL

Figure 6. Power Bus Output Assembly

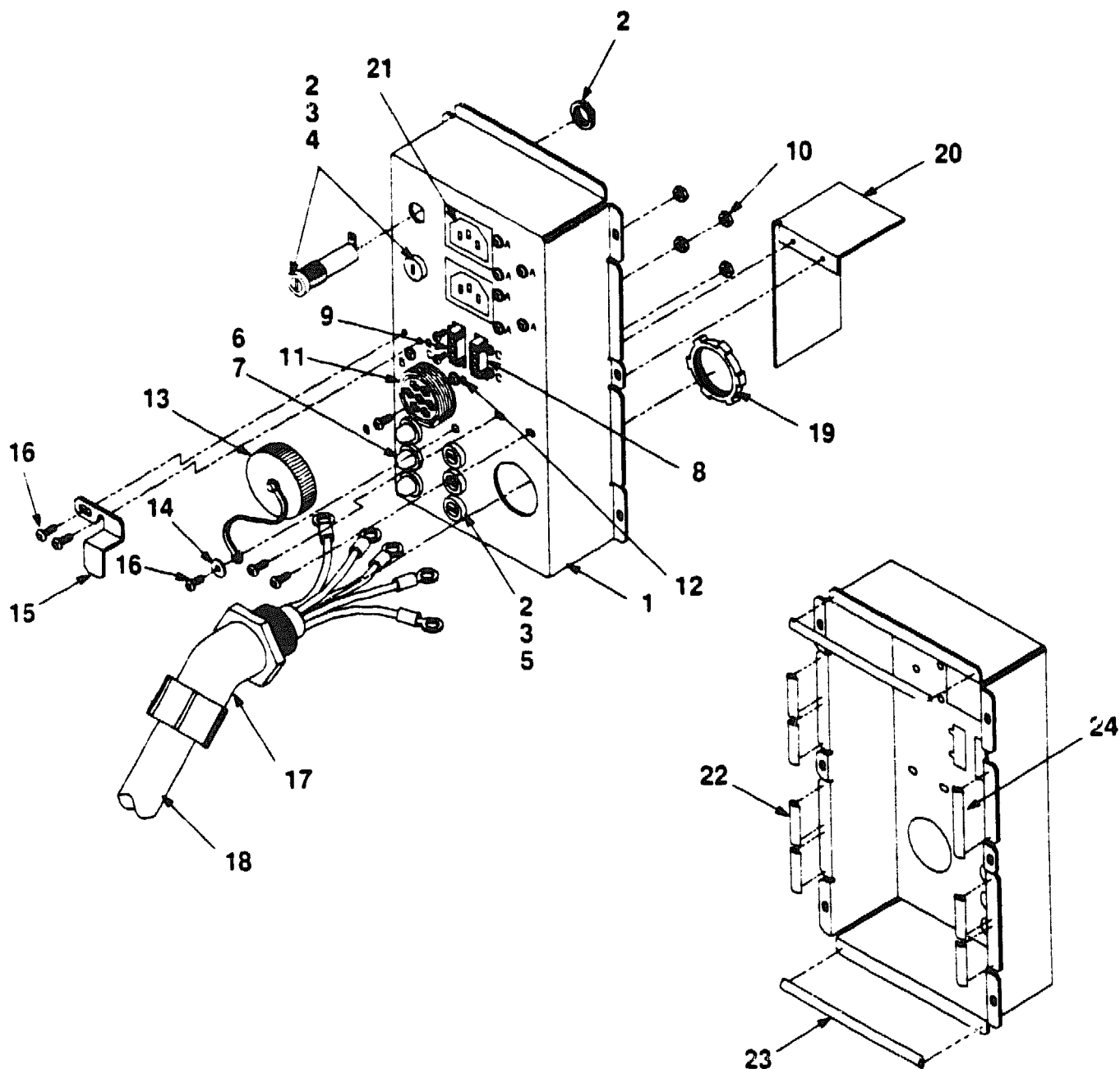
FIG. & ITEM NO.	DESCRIPTION	E DEC PART NO.	ECO CUT-IN H405 00004	USED ON CODE	REF FIG NO.
6-	POWER BUS OUTPUT ASSEMBLY (120V)	H405-E		AC	2
	POWER BUS OUTPUT ASSEMBLY (240V)	H405-F		BD	2
1	*CHASSIS ASSEMBLY (120V)	70-25506-01		AC	7
	*CHASSIS ASSEMBLY (240V)	70-25506-02		BD	7
2	*Harness Assembly, Wire (J2)	17-01803-01		AC	
	*Harness Assembly, Wire (J2)	17-01805-01		BD	
3	*Screw, Self-Tap Truss Hd No. 6-32 x 1/2	90-00062-14			
4	*Nut, Kep No. 6-32	90-10586-02			
5	*Harness Assembly, Wire (P3)	17-01804-01		AC	
	*Harness Assembly, Wire (P3)	17-01807-01		BD	
6	*Harness Assembly, Wire (P10)	17-01877-01		AC	
7	*PANEL ASSEMBLY, COMPONENT (120V)	70-25507-01		AC	8
	*PANEL ASSEMBLY, COMPONENT (240V)	70-25507-02		BD	8
8	*Washer, Flat	90-06664-00			
9	*Nut, Hex No. 10-32	90-06565-00			
10	*Jumper Assembly (Red)	17-01845-01		AC	
11	*Jumper Assembly (Yellow)	17-01845-02		AC	
12	*Harness Assembly, Wire 2 Cond Quick-Disconnect	17-01846-01		AC	
13	*COVER ASSEMBLY (120V)	70-25505-01		AC	9
	*COVER ASSEMBLY (240V)	70-25505-02		BD	9
14	*Harness Assembly, Wire 3 Cond	17-01811-01		BD	
15	*Harness Assembly, Wire 10 Cond	17-01808-01			
16	*Harness Assembly, Wire 4 Cond	17-01810-01		BD	
17	*Tie, Cable	90-07032-00			
18	*Screw, Self-Tap Truss Hd No. 6-32 x 1/4	90-00062-10			
19	*Cover	74-35210-01			
	LABELS (Not Shown)				
	*Label, "Fuse Warning"	36-25176-01		BD	
	*Label, "Fuse Replacement"	36-26213-01		BD	
	*Label, "H405-E"	36-26181-03		AC	
	*Label, "H405-F"	36-26181-04		BD	
	*Label, "Serial/Power Rating"	36-26211-10		AC	
	*Label, "Serial/Power Rating"	36-26211-11		BD	
	*Label, "Serial/Power Rating" (Ireland)	36-26211-12		BD	
	*Label, "Fuse Warning" (French/English)	36-26214-01		AC	
	*Label, "Blank"	36-27920-01			
	*Label	36-27921-01			
	*Label, "Black"	36-27922-01			



6200X-07-IL

Figure 7. Chassis Assembly

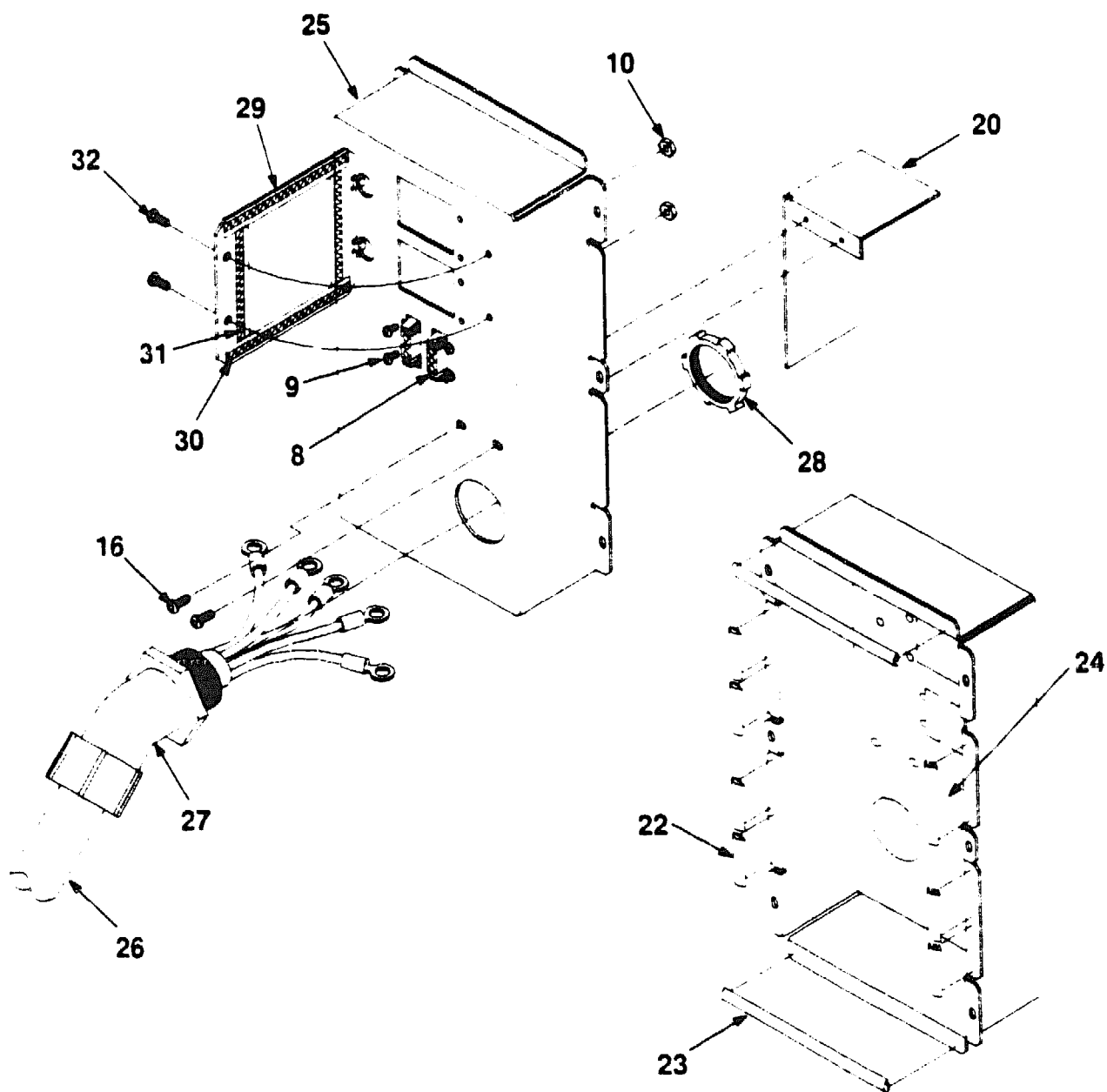
FIG. & ITEM NO.	DESCRIPTION	DEC PART NO.	ECO CUT-IN 70-25506 00001	USED ON CODE	REF FIG NO.
7-	CHASSIS ASSEMBLY (120V)	70-25506-01		AC	6
	CHASSIS ASSEMBLY (240V)	70-25506-02		BD	6
1	*Weldment, Chassis	70-24635-01			
2	*Filter, Line	12-25185-02		AC	
	*Filter, Power Line	12-26306-02		BD	
3	*Screw, Self-Tap Truss Hd No. 6-32 x 1/4	90-00062-10			
4	*Module, AC Control	54-15690-00			
5	*Washer, Flat Nylon	90-06707-00			
6	*Screw, Self-Tap Truss Hd No. 6-32 x 3/8	90-00062-12			
7	*Module, Isolation	20-28124-02			
8	*Connector, Power Receptacle	12-14157-06			
9	*Holder, Fuse 3AG Type 15A 250V	90-06994-00			
10	*Fuse, Slo Blo 3AG 2.0A 250V	90-07216-00			



VARIATION - 01

6200X-08-IL

Figure 8. Panel Assembly. Component (Sheet 1 of 2)

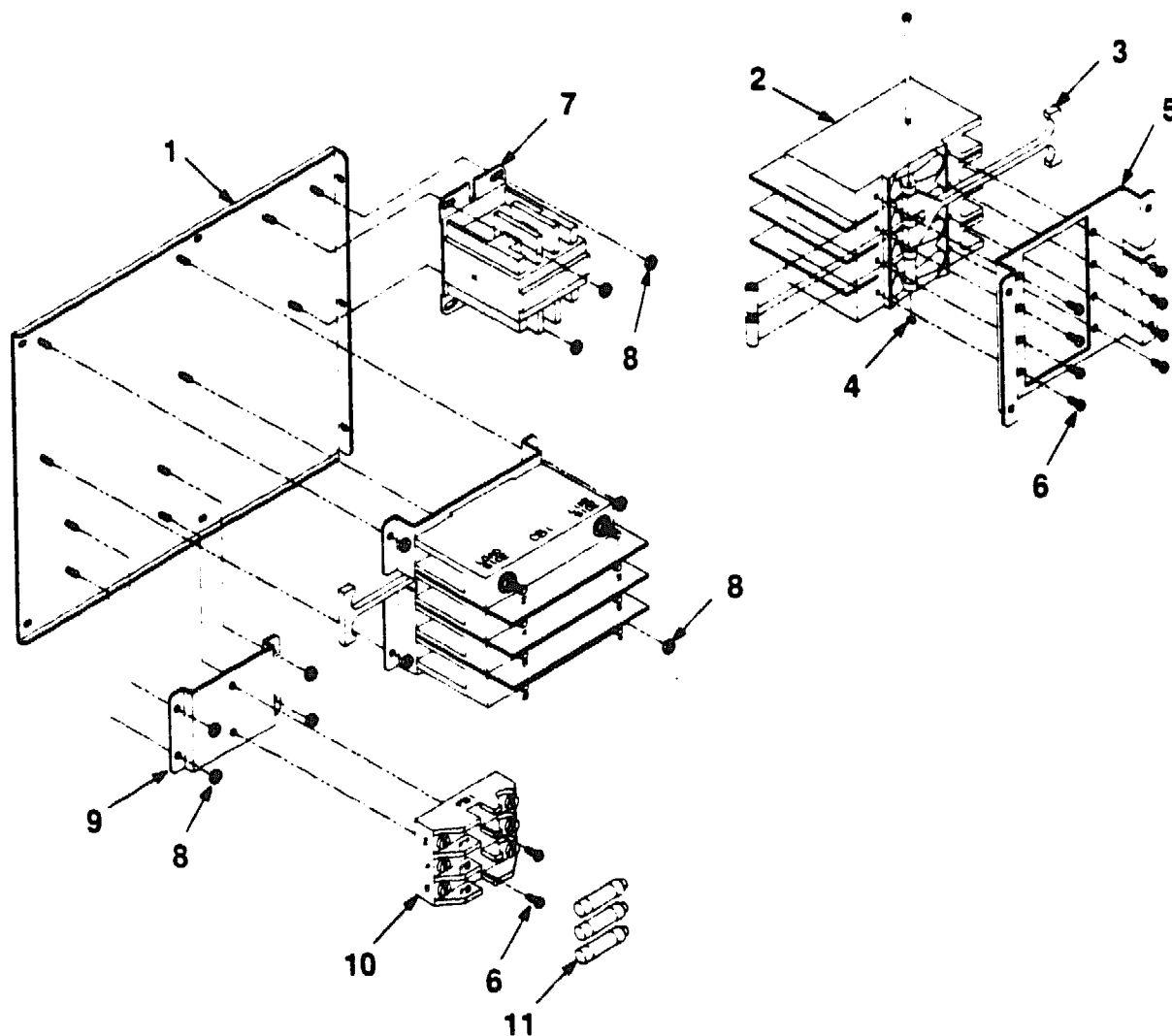


VARIATION - 02

6200X-08A-IL

Figure 8. Panel Assembly. Component (Sheet 2 of 2)

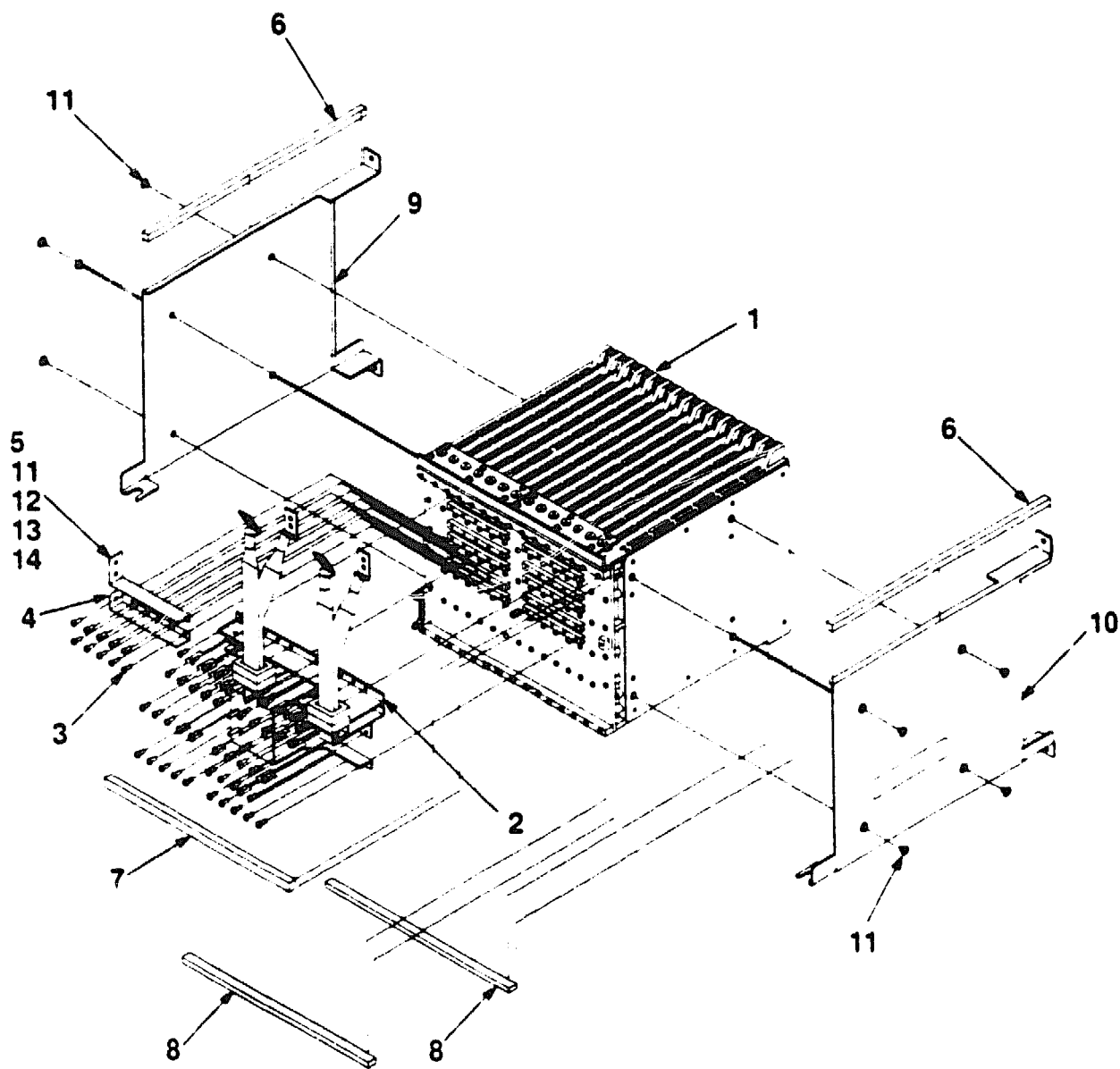
FIG. & ITEM NO.	DESCRIPTION	DEC PART NO.	ECO CUT-IN H405 00003	USED ON CODE	REF FIG NO.
8-	PANEL ASSEMBLY, COMPONENT (120V)	70-25507-01		AC	6
	PANEL ASSEMBLY, COMPONENT (240V)	70-25507-02		BD	6
1	*Panel, Component (120V)	74-35972-01		AC	
2	*Holder, Fuse 3AG Type 12A 250V	12-21126-01		AC	
3	*Carrier, Fuse 3AG Type 12A 250V	12-21126-03		AC	
4	*Fuse, Norm Blo 3AG 10A 250V	90-08390-00		AC	
5	*Fuse, Slo Blo 3AG 1.0A 250V	90-07212-00		AC	
6	*Lamp, White Lens Panel 125V	12-05303-01		AC	
7	*Connector, 1 Pin Mate-N-Lok	12-12169-01		AC	
8	*Filter, Power Bus	12-21099-02			
9	*Screw, Self-Tap Truss Hd No. 4-40 x 1/4	90-00062-01			
10	*Nut, Kep No. 6-32	90-10586-02			
11	*Connector, 7 Pin	12-11537-00		AC	
12	*Screw, Self-Tap Truss Hd No. 6-32 x 1/2	90-00062-14		AC	
13	*Cap Assembly, Connector Shell	12-16734-00		AC	
14	*Washer, Flat	90-06659-00		AC	
15	*Cover, Retainer Dust	74-36349-01		AC	
16	*Screw, Self-Tap Truss Hd No. 6-32 x 1/4	90-00062-10			
17	*Relief, Power Cord Strain	12-14574-00		AC	
18	*Harness Assembly, Wire 5 Conductor 10AWG Power Cord	17-01806-01		AC	
19	*Nut, Lock No. 1-11 x 1/2	90-09309-02		AC	
20	*Shield, AC Input	74-35213-01			
21	*Filter, EMI/RFI Line 47-63Hz	12-26355-02		AC	
22	*Gasket, RFI Shield	12-28686-10			
23	*Gasket, RFI Shield	12-28686-08			
24	*Gasket, RFI Shield	12-28686-15			
25	*Panel, Component (240V)	74-36117-01		BD	
26	*Harness Assembly, Wire 5 Conductor 12AWG Power Cord	17-01295-01		BD	
27	*Relief, Power Cord Strain	12-14574-03		BD	
28	*Nut, Lock No. 14 x 3/4	90-09309-01		BD	
29	*Cover, Options	74-37258-01		BD	
30	*Strip, Contact	12-28434-07		BD	
31	*Strip, Contact	12-28434-06		BD	
32	*Screw, Phi Pan Hd No. 6-32 x 3/8	90-09984-00		BD	



6200X-09-1L

Figure 9. Cover Assembly

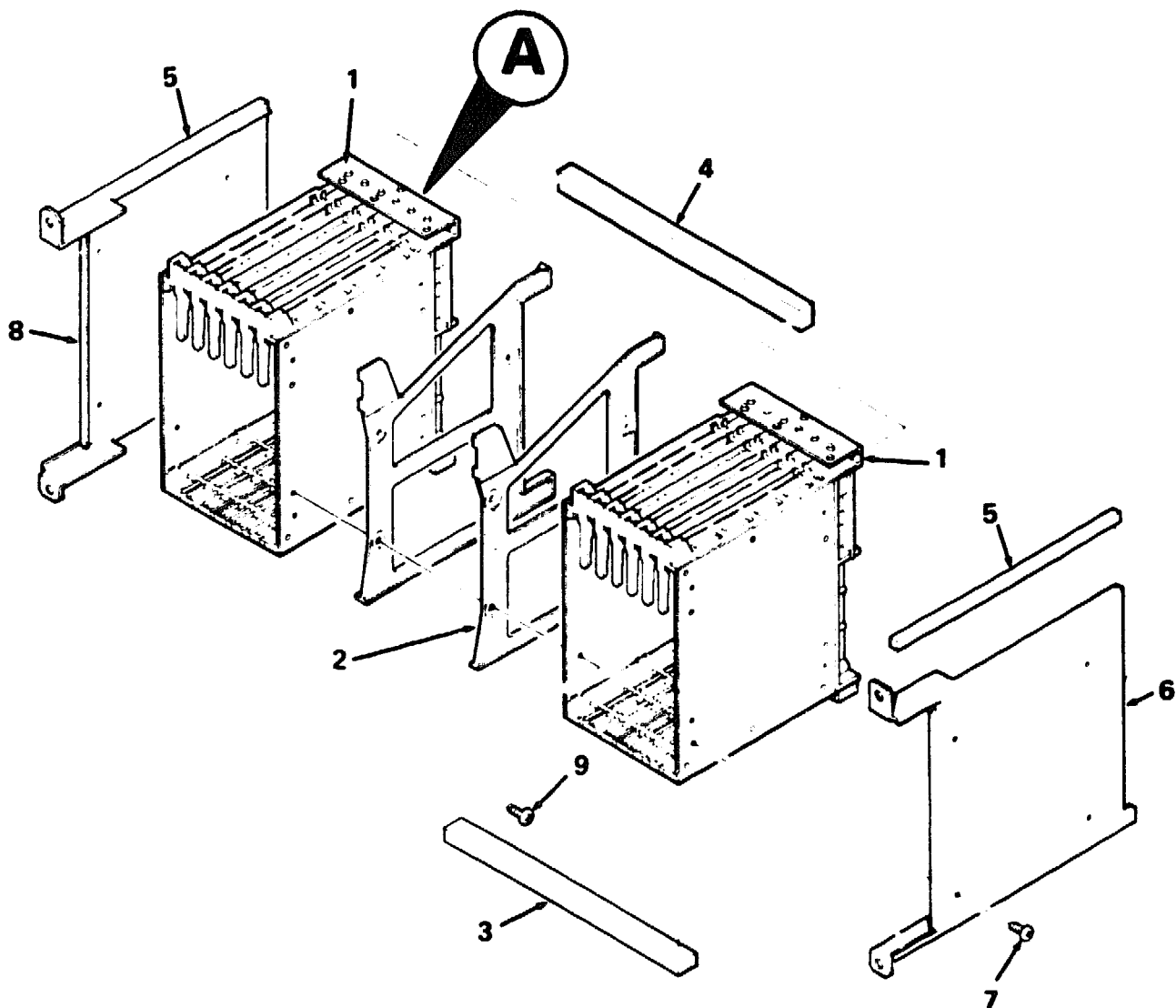
FIG. & ITEM NO.	DESCRIPTION	^B DEC PART NO.	ECO CUT-IN 70-25505 00001	USED ON CODE	REF FIG NO.
9-	COVER ASSEMBLY (120V) COVER ASSEMBLY (240V)	70-25505-01 70-25505-02		AC BD	6 6
1	*Cover Assembly, (LH)	74-36116-01			
2	*Circuit Breaker, 20A 240V (120V)	12-25471-02		AC	
	*Circuit Breaker, 11A 480V (240V)	12-28412-01		BD	
3	*Rod, Actuator	74-32259-01			
4	*Ring, External Retainer	90-09273-01			
5	*Bracket, Breaker Mounting	74-35212-01			
6	*Screw, Self-Tap Truss Hd No. 6-32 x 3/8	90-00062-12			
7	*Contactor, 3P DBL Breaker 30A 600V (120V)	12-11147-00		AC	
	*Contactor, 3P DBL Breaker 30A 600V (240V)	12-11147-01		BD	
8	*Nut, Kep No. 6-32	90-06560-00			
9	*Bracket, Fuse Box	74-36347-01		BD	
10	*Block, Fuse 3P 5AG Type 30A 600V (240V)	12-25633-01		BD	
11	*Fuse, 30A 600V (240V)	12-22573-02		BD	



6200X-10-IL

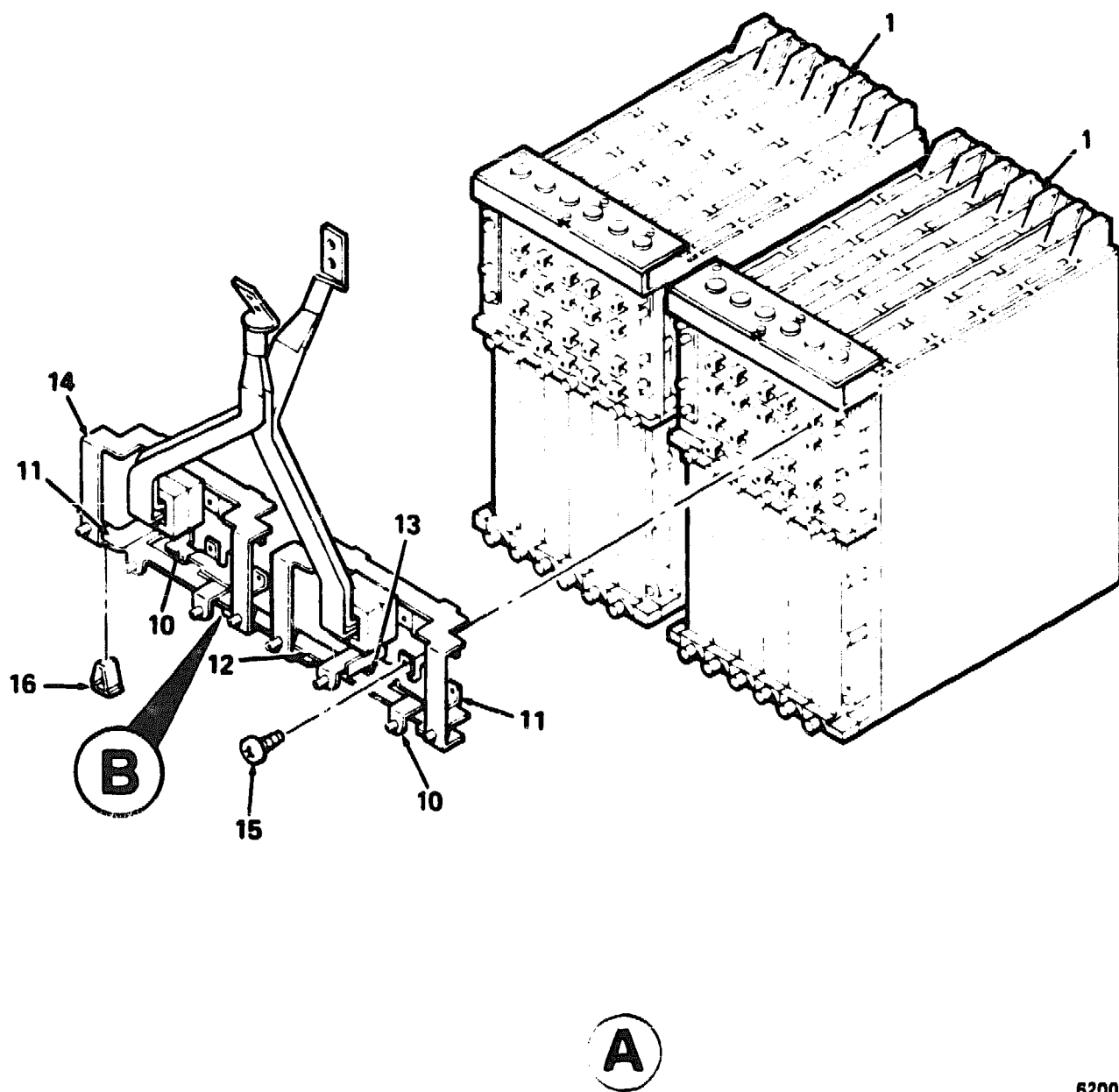
Figure 10. Bus Bar Assembly, XMI

FIG. & ITEM NO.	DESCRIPTION	A DEC PART NO.	ECO CUT-IN 70-24902 00000	USED ON CODE	REF FIG NO.
10-	BUS BAR ASSEMBLY, XMI	70-24902-01			2
1	*Card Cage Assembly, System	70-24373-01			
2	*Bus Bar Assembly	12-27676-01			
3	*Screw, Sems Phi Pan Hd No. 6-32 x 3/8	90-09984-07			
4	*Bus Bar, Uninsulated	12-27939-01			
5	*Bus Bar, Uninsulated	12-27938-01			
6	*Tape, Foam	74-36670-02			
7	*Seal, Top Air	74-34536-01			
8	*Seal, Bottom Air	74-34536-03			
9	*Plate, XMI Mounting (RH)	74-34763-01			
10	*Plate, XMI Mounting (LH)	74-34763-02			
11	*Screw, Phi Flat Hd No. 10-32 x 1/4	90-08007-02			
12	*Nut, Kep No. 8-32	90-06563-00			
13	*Tie, Cable	90-07031-00			
14	*Washer, Flat No.8	90-06660-00			
	HARNESS (Not Shown)				
	*Harness Assembly, Wire 15 Cond	17-01566-01			
	*Harness Assembly, Wire 04 Cond	17-01525-01			



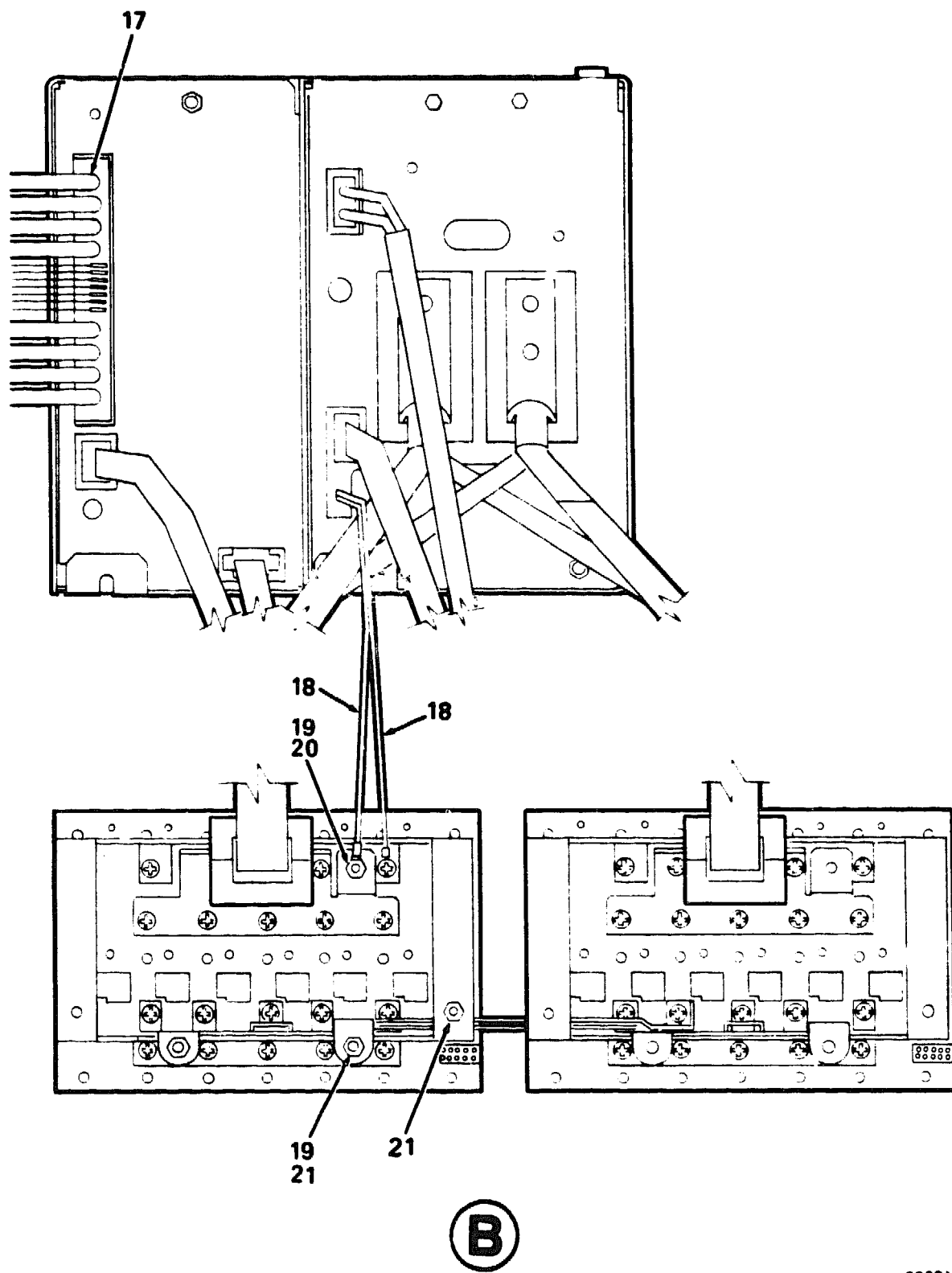
6200X-11-BD

Figure 11. Card Cage Assembly, Dual BI (Sheet 1 of 3)



6200X-11A-BD

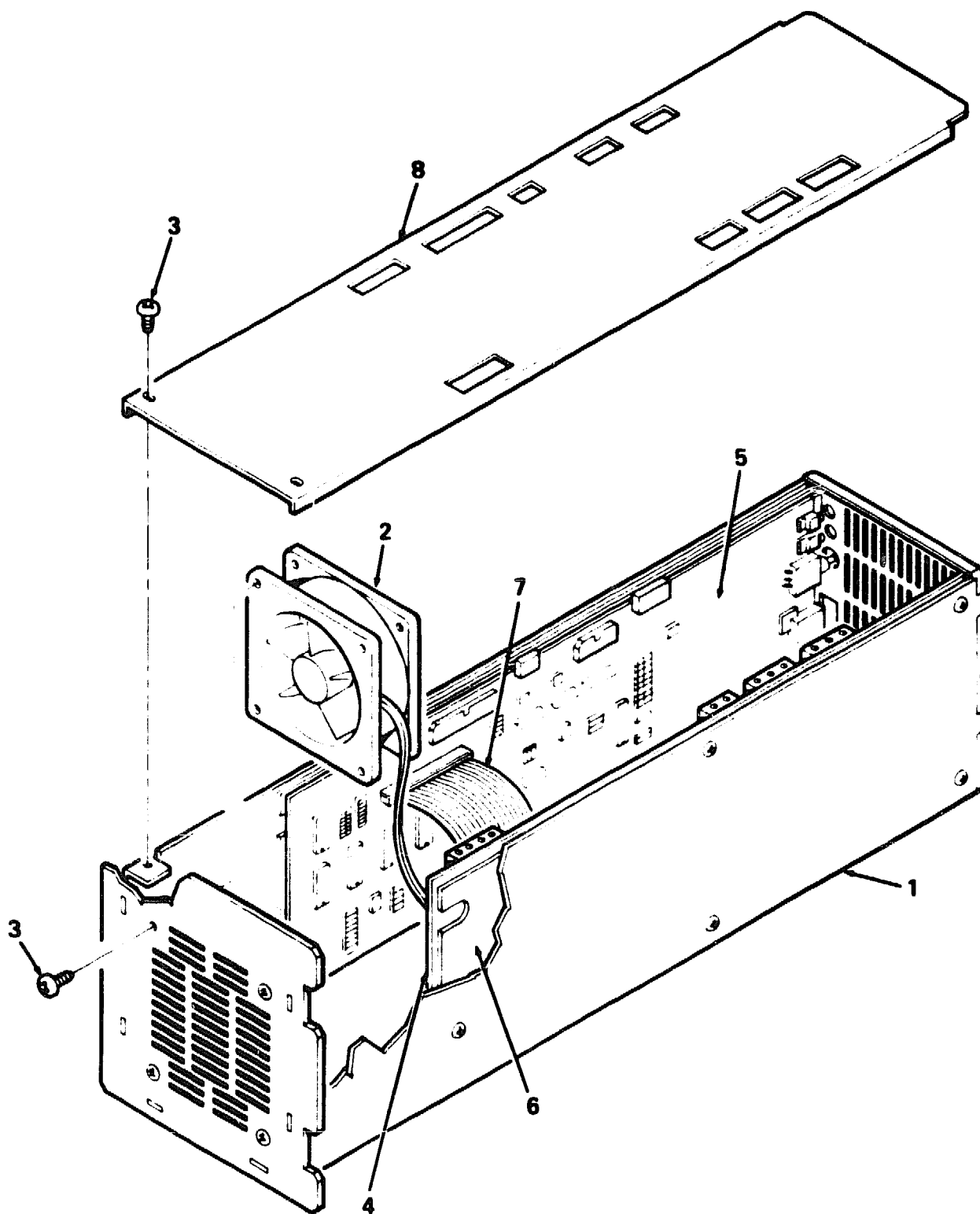
Figure 11. Card Cage Assembly, Dual BI (Sheet 2 of 3)



6200X-113-BD

Figure 11. Card Cage Assembly, Dual BI (Sheet 3 of 3)

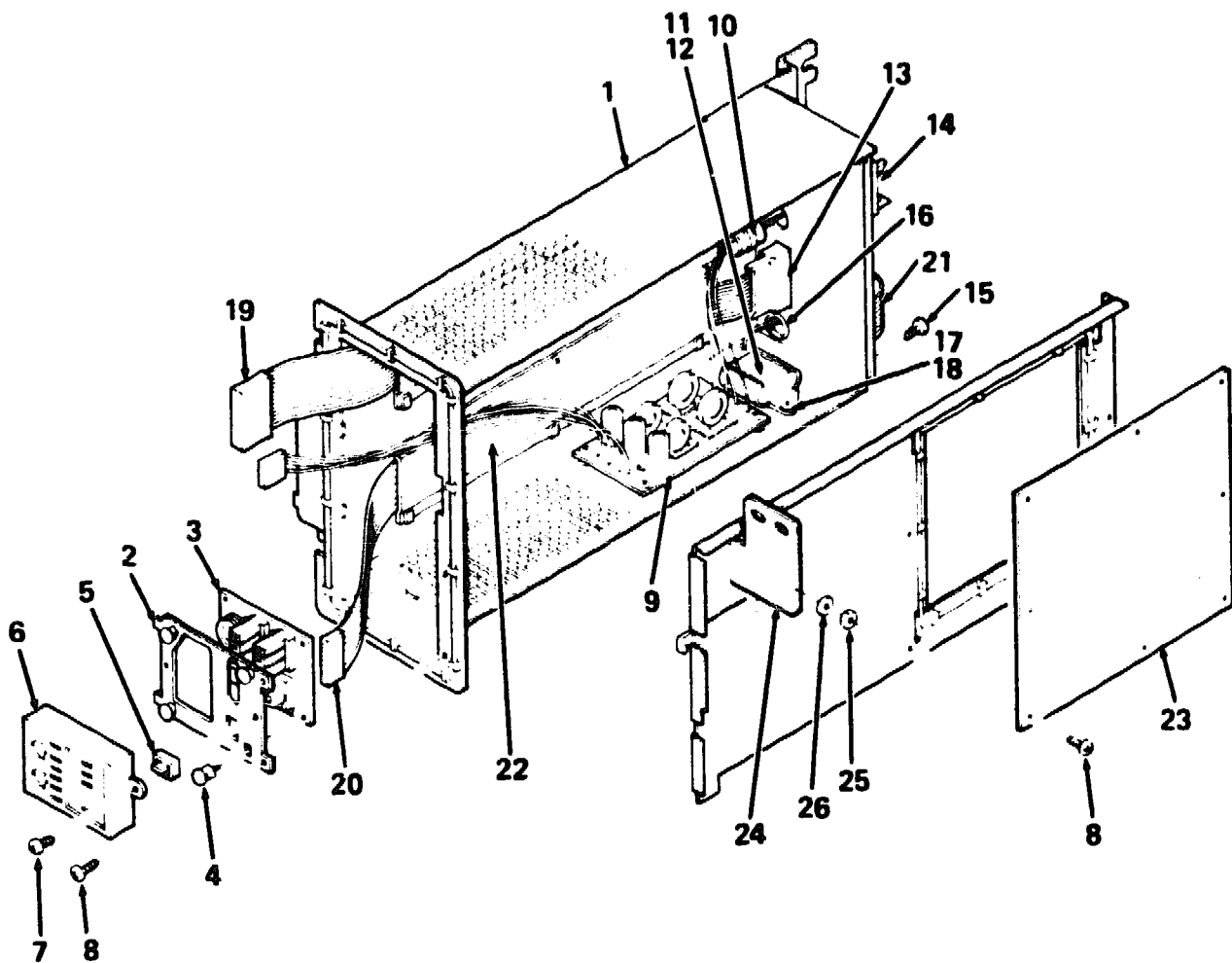
FIG. & ITEM NO.	DESCRIPTION	A DEC PART NO.	ECO CUT-IN 70-24126 00000	USED ON CODE	REF FIG NO.
11-	CARD CAGE ASSEMBLY, DUAL BI	70-24126-01			2
1	*Card Cage Assembly, VAXBI	H9400-AF			
2	*Spacer	74-33319-01			
3	*Seal, Bottom Air	74-34536-02			
4	*Seal, Top Air	74-34536-01			
5	*Tape, Foam	74-36670-01			
6	*Plate, BI Mounting (RH)	74-34762-01			
7	*Screw, Phi Flat Hd No. 10-32 x 1/4	90-08007-02			
8	*Plate, BI Mounting (LH)	74-34762-02			
9	*Screw, Phi Pan Hd No. 10-32 x 1.0	90-08077-01			
10	*Bus Bar, -2V Dual BI	12-28345-01			
11	*Bus Bar, -5V Dual BI	12-28342-01			
12	*Jumper, Bus Bar -5.2V	12-28343-01			
13	*Jumper Assembly	12-28344-01			
14	*Bus Bar Assembly, Dual BI	12-28508-01			
15	*Screw, Sems Phi Pan Hd No. 6-32 x 3/8	90-09984-07			
16	*Mount, Cable Tie	90-07867-00			
17	*Harness Assembly, Wire 26 Cond	17-01523-01			
18	*Harness Assembly, Wire 04 Cond	17-01525-01			
19	*Washer, Flat	90-08660-00			
20	*Nut, Kep No. 6-32	90-08560-00			
21	*Nut, Kep No. 8-32	90-08563-00			
	PLUGS (Not Shown)				
	*Plug, Node ID No.1	12-23701-01			
	*Plug, Node ID No.2	12-23701-02			
	*Plug, Node ID No.3	12-23701-03			
	*Plug, Node ID No.4	12-23701-04			
	*Plug, Node ID No.5	12-23701-05			
	*Plug, Node ID No.6	12-23701-06			



6200X-12-BD

Figure 12. Power Logic Box Assembly

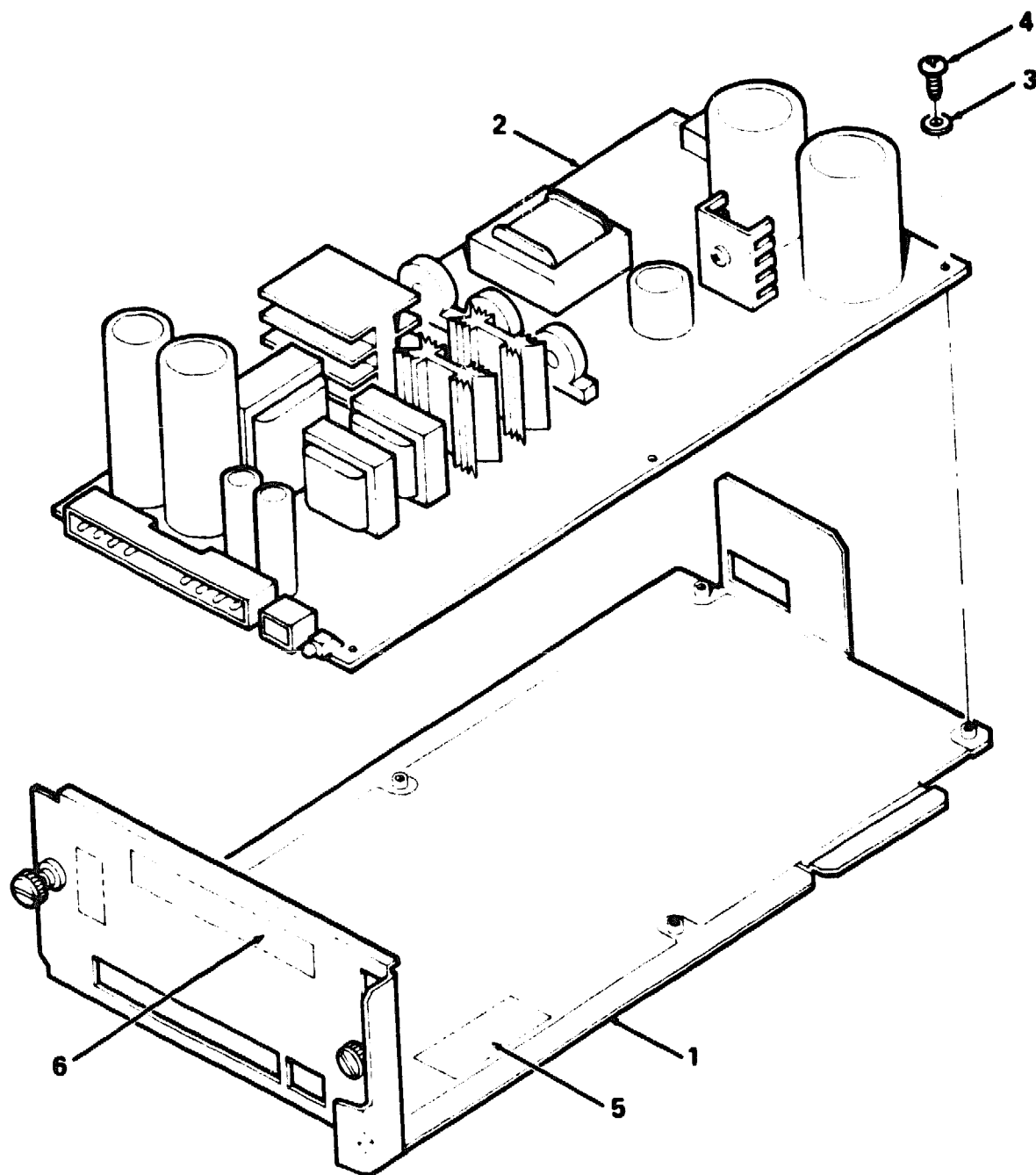
FIG. & ITEM NO.	DESCRIPTION	^C DEC PART NO.	ECO CUT-IN H7206 00002	USED ON CODE	REF FIG NO.
12-	POWER/LOGIC BOX ASSEMBLY	H7206-A			2
1	*Weldment, H7206	70-23033-01			
2	*Fan, Axial 45CFM 24VDC	12-24701-06			
3	*Screw, Sems Phi Pan Hd No. 6-32 x 5/16	90-09701-00			
4	*Module, AC Input/Fan Drive	54-18169-01			
5	*Module, AC Input/Logic	54-17007-01			
6	*Shield, PC Module	74-34053-01			
7	*Harness Assembly, Wire (J7,J8,J17)	17-01445-01			
8	*Cover, Top	74-34049-01			
	LABELS (Not Shown)				
	*Label, "Kapton Blank"	36-27920-01			
	*Label, "CSI"	36-27922-01			
	*Label, "Serial/Power"	36-17674-46			
	*Label, "Blank"	36-27921-01			



6200X-13-BD

Figure 13. Control Assembly. System

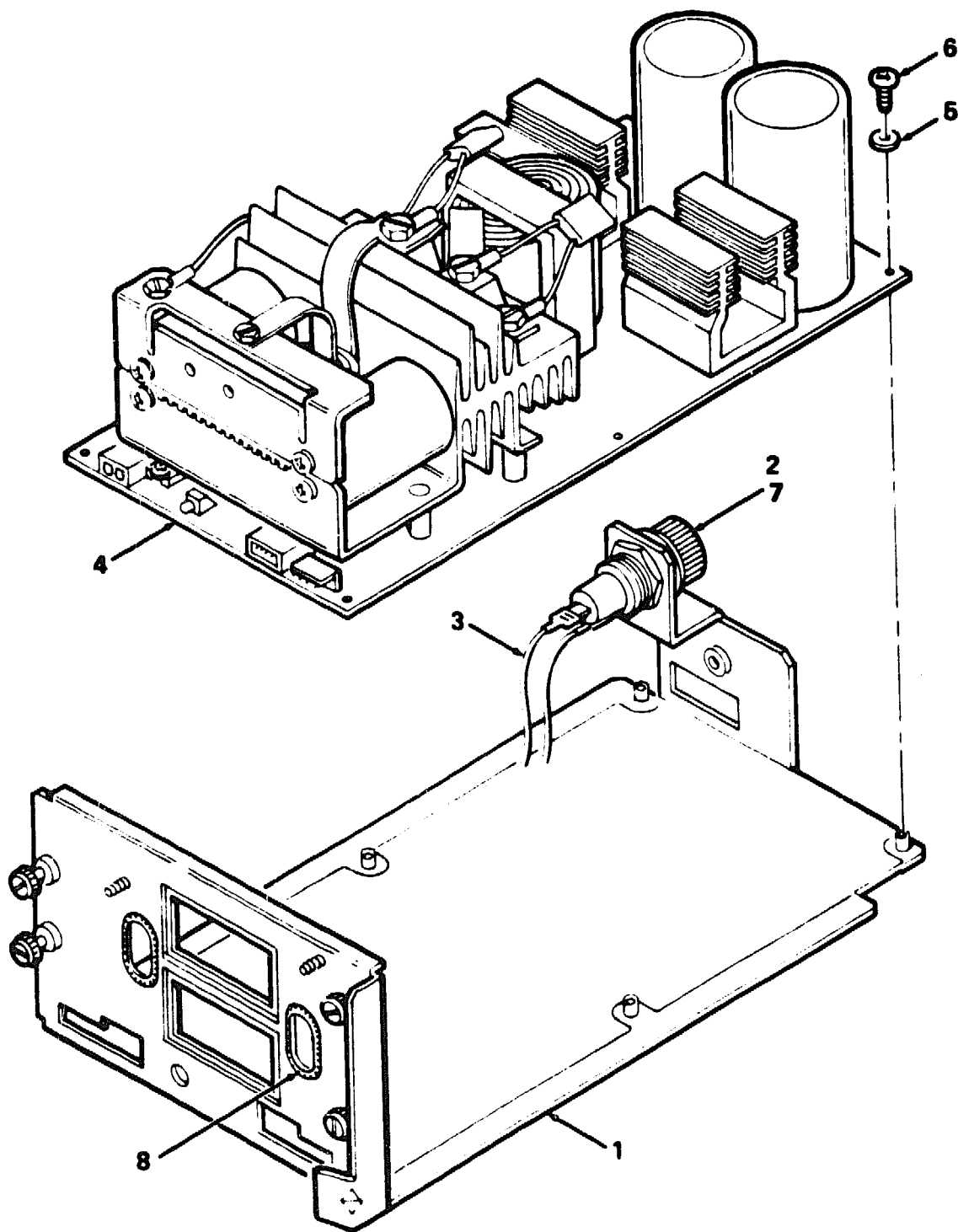
FIG. & ITEM NO.	DESCRIPTION	^C DEC PART NO.	ECO CUT-IN 70-24903 00002	USED ON CODE	REF FIG NO.
13-	CONTROL ASSEMBLY, SYSTEM	70-24903-01			2
1	*Housing Assembly	70-24418-01			
2	*Plate, Control Panel	74-35924-01			
3	*Module, Control Panel	54-16574-01			
4	*Standoff, Module	90-10568-01			
5	*Button, Reset	74-33423-01			
6	*Bezel Assembly, Control	70-22117-01			
7	*Screw, Sems Phi Pan Hd No. 4-40 x 1/4	90-09843-02			
8	*Screw, Sems Phi Pan Hd No. 6-32 x 5/16	90-09984-07			
9	*Module, Output Filter	20-28997-01			
10	*Tie, Cable	90-07880-00			
11	*Holder, Battery Pack	74-33477-01			
12	*Battery, 3 Cell 3.75V 0.18MA	12-19245-00			
13	*Header, PCB 26 Pin	12-28804-01			
14	*Module, Timing Control XTC XMI	20-29176-01			
15	*Screw, Sems Phi Pan Hd No. 6-32 x 1/2	90-09984-03			
16	*Grommet, Round Rubber	90-07015-00			
17	*Washer, Flat	90-06655-00			
18	*Rivet, Blind Dome	90-00030-06			
19	*Cable Assembly, Flat 26 Cond	17-01817-01			
20	*Cable Assembly, Flat 20 Cond	17-01818-01			
21	*Cable Assembly, Flat 20 Cond	17-01816-01			
22	*Plate, Housing	74-35920-01			
23	*Plate, Power Filter	74-35925-01			
24	*Bracket, Top Housing	74-35922-01			
25	*Nut, Kep No. 10-32	90-06565-00			
26	*Washer, Flat	90-06660-00			



6200X-14-BD

Figure 14 Regulator Assembly, 300 Watts

FIG. & ITEM NO.	DESCRIPTION	^B DEC PART NO.	ECO CUT-IN H7215 00001	USED ON CODE	REF FIG NO.
14-	REGULATOR ASSEMBLY, 300 WATTS	H7215-A			2
1	*Bracket Assembly, Regulator 300W	70-24169-01			
2	*Power Supply, -2.0V -5.25V +12.0V -12.0V	54-16977-01			
3	*Washer, Lock	90-06633-00			
4	*Screw, Phi Pan Hd No. 6-32 x 1/4	90-06020-01			
5	*Label "Serial/Power USA UR/CSA"	36-17674-46			
6	*Label "Kapton Blank"	36-27920-01			
	*Label "Blank"	36-27921-01			
	*Label "CSI"	36-27922-01			



6200X-15-BD

Figure 15. Regulator Assembly, 600 Watts

FIG. & ITEM NO.	DESCRIPTION	^C DEC PART NO.	ECO CUT-IN H7214 00002	USED ON CODE	REF FIG NO.
15-	REGULATOR ASSEMBLY, 600 WATTS	H7214-A			2
1	*Bracket Assembly, Regulator 600W	70-24168-01			
2	*Holder, Fuse 5AG Type 30A 600V	12-27980-01			
3	*Harness Assembly, Wire 2 Cond	17-01663-01			
4	*Converter, Input DC-DC 5V @ 300V 120A	54-17005-01			
5	*Washer, Lock	90-06633-00			
6	*Screw, Phi Pan Hd No. 6-32 x 5/16	90-06021-01			
7	*Fuse, Norm Blo 5AG 8.0A 600V	12-17199-02			
8	*Grommet, Caterpillar	90-07035-00			
	LABELS (Not Shown)				
	*Label, "Serial/Power USA UR/CSA"	36-17674-46			
	*Label, "Serial/Power Ireland"	36-17674-58			
	*Label, "Blank"	36-27921-01			
	*Label, "CSI"	36-27922-01			
					Ω

PART NUMBER/DESCRIPTION SORT



VAX 6200 SYSTEM SORT BY DEC PART NUMBER

PART NO.	DESCRIPTION	FIG NO.	ITEM NO.
12-05303-01	Lamp, White Lens Panel 125V	8	6
12-11147-00	Contact, 3P DBL Breaker 30A 600V (120V)	9	7
12-11147-01	Contact, 3P DBL Breaker 30A 600V (240V)	9	7
12-11255-17	Filter, Foam Air	5	10
12-11255-22	Filter, Foam Air	5	11
12-11255-23	Filter, Foam Air	4	34
12-11255-24	Filter, Foam Air	4	26
12-11255-25	Filter, Foam Air	4	22
12-11537-00	Connector, 7 Pin	8	11
12-12169-01	Connector, 1 Pin Mate-N-Lok	8	7
12-13756-07	Strap, Ground	4	7
12-13756-09	Strap, Ground	5	15
12-14157-06	Connector, Power Receptacle	7	8
12-14574-00	Relief, Power Cord Strain	8	17
12-14574-03	Relief, Power Cord Strain	8	27
12-15843-01	Clip, Flat Cable	2	20
12-15843-03	Clip, Flat Cable	2	23
12-16734-00	Cap Assembly, Connector Shell	8	13
12-17119-01	Keys, Plastic	1	22
12-17119-01	Keys, Plastic	1A	21
12-17199-02	Fuse, Norm Blo 5AG 8.0A 600V	15	7
12-19245-00	Battery, 3 Cell 3.75V 0.18MA	13	12
12-20203-01	Hinge, Pull (LH)	5	2
12-20203-01	Hinge Assembly (LH)	4	3
12-21099-02	Filter, Power Bus	8	8
12-21126-01	Holder, Fuse 3AG Type 12A 250V	8	2
12-21126-03	Carrier, Fuse 3AG Type 12A 250V	8	3
12-21535-01	Clip, Nylon For RF Gasket	3	6
12-21535-01	Clip, Nylon For RF Gasket	2	22
12-22196-02	Connector Assembly, D Sub 15 Pin	1	Not Shown
12-22196-02	Connector Assembly, D Sub 15 Pin	1A	Not Shown
12-22573-02	Fuse, 30A 600V (240V)	9	11
12-23701-01	Plug, Node ID No. 1	11	Not Shown
12-23701-02	Plug, Node ID No. 2	11	Not Shown
12-23701-03	Plug, Node ID No. 3	11	Not Shown
12-23701-04	Plug, Node ID No. 4	11	Not Shown
12-23701-05	Plug, Node ID No. 5	11	Not Shown
12-23701-06	Plug, Node ID No. 6	11	Not Shown
12-24023-01	Cable Assembly, w/Wrist Strap	2	46
12-24095-01	Latch, Turn-Grip	4	2
12-24095-01	Latch, Turn-Grip	5	5
12-24701-06	Fan, Axial 45CFM 24 Vdc	12	2
12-25024-11	Sensor, Air Flow Temp	2	30
12-25185-02	Filter, Line	7	2
12-25469-01	Grommet	2	17
12-25471-02	Circuit Breaker, 20A 240V (120V)	9	2
12-25633-01	Block, Fuse 3P 5AG Type 30A 600V (240V)	9	10
12-26306-02	Filter, Power Line	7	2
12-26339-01	Key, Cabinet	1	Not Shown
12-26339-01	Key, Cabinet	1A	Not Shown
12-26355-02	Filter, EMI/RFI Line 47-63 Hz	8	21
12-27250-01	Screw, Shoulder No. 10-32 x 1/8	3	52
12-27676-01	Bus Bar Assembly	10	2
12-27848-01	Blower, Backward 24 Vdc	2	18

VAX 6200 SYSTEM SORT BY DEC PART NUMBER

PART NO.	DESCRIPTION	FIG NO.	ITEM NO.
12-27938-01	Bus Bar, Uninsulated	10	5
12-27939-01	Bus Bar, Uninsulated	10	4
12-27980-01	Holder, Fuse 5AG Type 30A 600V	15	2
12-28342-01	Bus Bar, -5V Dual BI	11	11
12-28343-01	Jumper, Bus Bar -5.2V	11	12
12-28344-01	Jumper Assembly	11	13
12-28345-01	Bus Bar, -2V Dual BI	11	10
12-28412-01	Circuit Breaker, 11A 480V (240V)	9	2
12-28434-06	Strip, Contact 2.66 Inches Long	4	9
12-28434-06	Strip, Contact	8	31
12-28434-07	Strip, Contact	8	30
12-28434-07	Strip, Contact 3.465 Inches Long	4	10
12-28434-08	Strip, Contact 0.465 Inches Long	4	11
12-28508-01	Bus Bar Assembly, Dual BI	11	14
12-28686-01	Gasket, RFI Shield	3	46
12-28686-02	Gasket, RFI Shield	4	12
12-28686-02	Shield, RFI	5	7
12-28686-03	Gasket, RFI Shield	4	13
12-28686-04	Gasket, RFI Shield	4	14
12-28686-05	Gasket, RFI Shield	4	15
12-28686-06	Gasket, RFI Shield	4	16
12-28686-07	Gasket, RFI Shield	4	17
12-28686-07	Gasket, RFI Shield	3	44
12-28686-08	Gasket, RFI Shield	4	18
12-28686-08	Gasket, RFI Shield	8	23
12-28686-09	Gasket, RFI Shield	4	19
12-28686-10	Gasket, RFI Shield	3	45
12-28686-10	Gasket, RFI Shield	8	22
12-28686-10	Gasket, RFI Shield	4	20
12-28686-11	Gasket, RFI Shield	4	21
12-28686-11	Gasket, RFI Shield	3	47
12-28686-12	Gasket, BECU	5	6
12-28686-13	Gasket, RFI Shield	4	32
12-28686-14	Gasket, RFI Shield	4	33
12-28686-14	Gasket, RFI Shield	2	12
12-28686-15	Gasket, RFI Shield	8	24
12-28686-16	Gasket, RFI Shield	2	11
12-28686-17	Gasket, RFI Shield	2	10
12-28804-01	Header, PCB 26 Pin	13	13
16 28393-01	Transformer, 3-Phase P=416 50 Hz 4.5 kVA	2	3
17-00313-02	Cable Assembly, Molded Shielded 25 Pin	1	Not Shown
17-00313-02	Cable Assembly, Molded Shielded 25 Pin	1A	Not Shown
17-00849-08	Cable Assembly, Flat Ribbon	2	Not Shown
17-01149-01	Jumper Assembly	2	Not Shown
17-01295-01	Harness Assembly, Wire 5 Conductor 12AWG Power Cord	8	26
17-01445-01	Harness Assembly, Wire (J7, J8, J17)	12	7
17-01446-01	Harness Assembly, Wire 6 Cond	2	38
17-01447-01	Harness Assembly, Wire 4 Cond	2	39
17-01458-01	Harness Assembly, Wire	2	60
17-01496-01	Cable Assembly, 6 Cond	2	24
17-01497-02	Cable Assembly, Flat 34 Cond	2	51
17-01498-01	Cable Assembly, Flat 34 Cond	2	52
17-01499-01	Harness Assembly, Wire	2	35
17-01501-01	Harness Assembly, Wire	2	5

VAX 6200 SYSTEM SORT BY DEC PART NUMBER

PART NO.	DESCRIPTION	FIG NO.	ITEM NO.
17-01523-01	Harness Assembly, Wire 26 Cond	11	17
17-01525-01	Harness Assembly, Wire 04 Cond	10	Not Shown
17-01525-01	Harness Assembly, Wire 04 Cond	11	18
17-01549-01	Harness Assembly, 5 Cond	2	43
17-01566-01	Harness Assembly, Wire 15 Cond	10	Not Shown
17-01567-01	Cable Assembly, 4 Cond	2	25
17-01568-02	Cable Assembly, 20 Cond	2	57
17-01569-01	Harness Assembly, Wire 4 Cond 10 Pin	2	49
17-01570-01	Harness Assembly, Wire 9 Cond	2	19
17-01662-01	Harness Assembly, Wire	2	59
17-01663-01	Harness Assembly, Wire 2 Cond	15	3
17-01666-01	Cable Assembly, Flat 34 Cond	2	50
17-01803-01	Harness Assembly, Wire (J2)	6	2
17-01804-01	Harness Assembly, Wire (P3)	6	5
17-01805-01	Harness Assembly, Wire (J2)	6	2
17-01806-01	Harness Assembly, Wire 5 Conductor 10AWG Power Cord	8	18
17-01807-01	Harness Assembly, Wire (P3)	6	5
17-01808-01	Harness Assembly, Wire 10 Cond	6	15
17-01810-01	Harness Assembly, Wire 4 Cond	6	16
17-01811-01	Harness Assembly, Wire 3 Cond	6	14
17-01814-01	Harness Assembly, Wire 26 Cond	2	68
17-01815-01	Harness Assembly	2	6
17-01816-01	Cable Assembly, Flat 20 Cond	13	21
17-01817-01	Cable Assembly, Flat 26 Cond	13	1
17-01818-01	Cable Assembly, Flat 20 Cond	13	20
17-01833-01	Harness Assembly, Wire 4 Cond 2 Pin	2	48
17-01844-01	Harness Assembly, Wire 4 Cond	2	40
17-01845-01	Jumper Assembly (Red)	6	10
17-01845-02	Jumper Assembly (Yellow)	6	11
17-01846-01	Harness Assembly, Wire 2 Cond Quick-Disconnect	6	12
17-01877-01	Harness Assembly, Wire (P10)	6	6
17-01897-02	Cable Assembly, Flat	2	Not Shown
17-01897-03	Cable Assembly, Flat (K1J13 to K3J1)	1A	Not Shown
17-01897-03	Cable Assembly, Flat (K1J13 to K3J1)	1	Not Shown
20-28124-02	Module, Isolation	7	7
20-28997-01	Module, Output Filter	13	9
20-29176-01	Module, Timing Control XTC XMI	13	14
36-12680-02	Label, "Ground"	1A	6
36-12680-02	Label, "Ground"	1	6
36-12680-02	Label, "Ground Symbol"	2	Not Shown
36-13272-00	Label, "Ground"	4	8
36-13272-00	Label, "Ground"	5	17
36-17674-00	Label, "Serial/ Power"	2	Not Shown
36-17674-46	Label, "Serial/Power USA UR/CSA"	15	Not Shown
36-17674-46	Label, "Serial/Power USA UR/CSA"	14	5
36-17674-46	Label, "Serial/Power"	12	Not Shown
36-17674-58	Label, "Serial/Power Ireland"	15	Not Shown
36-17880-02	Label, "FCC Class A Processor"	1	Not Shown
36-17880-02	Label, "FCC Class A Processor"	1A	Not Shown
36-18307-05	Label, "Assembly"	1	Not Shown
36-18307-05	Label, "Assembly"	1A	Not Shown
36-22147-06	Label, "Bar Code"	2	Not Shown
36-23595-02	Label, "Control Panel	2	Not Shown

VAX 6200 SYSTEM SORT BY DEC PART NUMBER

PART NO.	DESCRIPTION	FIG NO.	ITEM NO.
36-23595-02	Label, "Control Panel"	2	Not Shown
36-25176-01	Label, "Fuse Warning"	6	Not Shown
36-25189-01	Label, "System Electrical Data 240V"	1A	Not Shown
36-25189-01	Label, "System Electrical Data 240V"	1	Not Shown
36-25189-02	Label, "System Electrical Data 120V"	1	Not Shown
36-25189-02	Label, "System Electrical Data 120V"	1A	Not Shown
36-25988-02	Label, "PTT Approval"	1A	Not Shown
36-25988-02	Label, "PTT Approval"	1	Not Shown
36-26181-03	Label, "H405-E"	6	Not Shown
36-26181-04	Label, "H405-F"	6	Not Shown
36-26211-10	Label, "Serial/Power Rating"	6	Not Shown
36-26211-11	Label, "Serial/Power Rating"	6	Not Shown
36-26211-12	Label, "Serial/Power Rating" (Ireland)	6	Not Shown
36-26213-01	Label, "Fuse Replacement"	6	Not Shown
36-26214-01	Label, "Fuse Warning" (French/English)	6	Not Shown
36-27020-01	Label, "Warning"	1	Not Shown
36-27020-01	Label, "Warning"	1A	Not Shown
36-27920-01	Label, "Kapton Blank"	14	6
36-27920-01	Label, "Kapton Blank"	12	Not Shown
36-27920-01	Label, "Blank"	6	Not Shown
36-27921-01	Label, "Blank"	12	Not Shown
36-27921-01	Label, "Blank"	15	Not Shown
36-27921-01	Label, "Blank"	14	6
36-27921-01	Label	6	Not Shown
36-27922-01	Label, "CSI"	15	Not Shown
36-27922-01	Label, "CSI"	14	6
36-27922-01	Label, "CSI"	12	Not Shown
36-27922-01	Label, "Black"	6	Not Shown
36-28231-08	Label, "Direct Thermal"	1	Not Shown
36-28231-08	Label, "Direct Thermal"	1A	Not Shown
54-15690-00	Module, AC Control	7	4
54-16574-01	Module, Control Panel	13	3
54-16977-01	Power Supply, -2.0V -5.25V +12.0V -12.0V	14	2
54-17005-01	Converter, Input DC-DC 5V @ 300V 120A	15	4
54-17007-01	Module, AC Input/Logic	12	5
54-18169-01	Module, AC Input/Fan Drive	12	4
54-18172-01	Module, Clock Arbiter	2	58
62AMB-YE	62AMB-YE (120V)	1	N/A
62AMB-YJ	62AMB-YJ (240V)	1	N/A
62AMN-YE	62AMN-YE (208V)	1A	N/A
62AMN-YJ	62AMN-YJ (380/415V)	1A	N/A
70-19485-01	Panel Assembly, End	1A	4
70-19485-01	Panel Assembly, End	1	4
70-19581-02	Weldment, Rear Switch Angle Seal	3	42
70-19605-01	Gasket Assembly	2	64
70-19605-02	Gasket Assembly	2	21
70-19605-04	Gasket Assembly	3	27
70-19605-06	Gasket Assembly	3	5
70-19605-08	Gasket Assembly	3	14
70-19605-11	Gasket Assembly	3	19
70-19605-13	Gasket Assembly	3	50
70-19605-20	Gasket Assembly	3	51

VAX 6200 SYSTEM SORT BY DEC PART NUMBER

PART NO.	DESCRIPTION	FIG NO.	ITEM NO.
70-19605-26	Gasket Assembly	3	15
70-19605-30	Gasket Assembly	3	31
70-22117-01	Bezel Assembly, Control	13	6
70-23397-01	Cover, Top Weldment	1	2
70-23397-01	Cover, Top Weldment	1A	2
70-23953-01	Weldment, H7206	12	1
70-24124-01	DOOR ASSEMBLY, REAR	5	N/A
70-24124-01	DOOR ASSEMBLY, REAR	1	9
70-24124-01	DOOR ASSEMBLY, REAR	1A	9
70-24125-01	Weldment, Rear Door	5	1
70-24126-01	CARD CAGE ASSEMBLY, DUAL BI	11	N/A
70-24126-01	CARD CAGE ASSEMBLY, DUAL BI	2	62
70-24136-01	Tray Assembly	3	28
70-24168-01	Bracket Assembly, Regulator 600W	15	1
70-24169-01	Bracket Assembly, Regulator 300W	14	1
70-24373-01	Card Cage Assembly, System	10	1
70-24389-01	Cover Assembly, BI Card Cage	2	42
70-24390-01	Cover Assembly, XMI Card Cage	2	41
70-24391-01	Tube, Weldment	3	24
70-24409-01	Plane Assembly, Ground	3	39
70-24410-01	Weldment, Cage	3	20
70-24418-01	Housing Assembly	13	1
70-24610-01	I/O Assembly, Lower	3	41
70-24611-01	Structure Assembly, Blower	3	10
70-24612-01	Extension Assembly, Front	2	15
70-24613-01	Extension Assembly, Rear	2	16
70-24614-01	CABINET ASSEMBLY, MECHANICAL	3	N/A
70-24614-01	CABINET ASSEMBLY, MECHANICAL	2	1
70-24615-01	Weldment, Chassis (XMI)	3	21
70-24616-01	Weldment, Chassis (BI)	3	23
70-24618-01	Frame Assembly, Full Width Hinged	3	40
70-24621-01	Seal, Angle Weldment	3	18
70-24622-01	Weldment, Front Door	4	1
70-24623-01	DOOR ASSEMBLY, FRONT	4	N/A
70-24623-01	DOOR ASSEMBLY, FRONT	1A	12
70-24623-01	DOOR ASSEMBLY, FRONT	1	12
70-24635-01	Weldment, Chassis	7	1
70-24742-02	Frame Assembly, 1.5 Bay	3	1
70-24900-01	POWER AND PACKAGING ASSEMBLY (120V)	2	N/A
70-24900-01	POWER & PACKAGING ASSEMBLY (14 Slot, 120V)	1A	1
70-24900-01	POWER & PACKAGING ASSEMBLY (14 Slot, 120V)	1	1
70-24900-02	POWER & PACKAGING ASSEMBLY (14 Slot, 240V)	1	1
70-24900-02	POWER AND PACKAGING ASSEMBLY (240V)	2	N/A
70-24900-02	POWER & PACKAGING ASSEMBLY (14 Slot, 240V)	1A	1
70-24902-01	BUS BAR ASSEMBLY, XMI	2	2
70-24902-01	BUS BAR ASSEMBLY, XMI	10	N/A
70-24903-01	CONTROL ASSEMBLY, SYSTEM	13	N/A
70-24903-01	CONTROL ASSEMBLY, SYSTEM	2	32
70-24934-01	Cover, Rear	5	12
70-25505-01	COVER ASSEMBLY (120V)	9	N/A
70-25505-01	COVER ASSEMBLY (120V)	6	13
70-25505-02	COVER ASSEMBLY (240V)	6	13
70-25505-02	COVER ASSEMBLY (240V)	9	N/A
70-25506-01	CHASSIS ASSEMBLY (120V)	6	1
70-25506-01	CHASSIS ASSEMBLY (120V)	7	N/A
70-25506-02	CHASSIS ASSEMBLY (240V)	7	N/A
70-25506-02	CHASSIS ASSEMBLY (240V)	6	1

VAX 6200 SYSTEM SORT BY DEC PART NUMBER

PART NO.	DESCRIPTION	FIG NO.	ITEM NO.
70-25507-01	PANEL ASSEMBLY, COMPONENT (120V)	8	N/A
70-25507-01	PANEL ASSEMBLY, COMPONENT (120V)	6	7
70-25507-02	PANEL ASSEMBLY, COMPONENT (240V)	6	7
70-25507-02	PANEL ASSEMBLY, COMPONENT (240V)	8	N/A
70-25525-01	Weldment, Cable Guide	2	27
74-13707-00	Strip	4	24
74-13707-01	Strip, Left and Right	4	23
74-13707-03	Strip	5	8
74-13707-07	Strip	5	9
74-14318-00	Key, Button	3	54
74-26407-01	Panel, Double Sub	1	Not Shown
74-26407-01	Panel, Double Sub	1A	Not Shown
74-26638-01	Seal, Rear Single Angle	3	43
74-26925-01	Shield, Spring	3	34
74-31616-02	Logo, Corporate	1	16
74-31616-02	Logo, Corporate	1A	16
74-32259-01	Rod, Actuator	9	3
74-33015-01	Screen, Bottom	3	32
74-33319-01	Spacer	1	2
74-33423-01	Button, Reset	13	5
74-33477-01	Holder, Battery Pack	13	11
74-34053-01	Shield, PC Module	12	6
74-34110-01	Support, H7206 Rear	3	36
74-34408-01	Bracket (LH)	3	30
74-34409-01	Bracket (RH)	3	29
74-34410-10	Panel (RH)	3	26
74-34536-01	Seal, Top Air	11	4
74-34536-01	Seal, Top Air	10	7
74-34536-02	Seal, Bottom Air	11	3
74-34536-03	Seal, Bottom Air	10	8
74-34752-01	Bracket, Front Sensor	2	29
74-34756-01	Rail, Third Support	3	2
74-34762-01	Plate, BI Mounting (RH)	11	6
74-34762-02	Plate, BI Mounting (LH)	11	8
74-34763-01	Plate, XMI Mounting (RH)	10	9
74-34763-02	Plate, XMI Mounting (LH)	10	10
74-34982-01	Plate, H7206 Mounting	3	35
74-35004-01	Panel, I/O Blower	2	28
74-35039-01	Seal, Front Angle Single	3	16
74-35042-01	Stiffener, Horizontal	4	25
74-35049-01	Bracket, Blower Structure (RH)	3	8
74-35050-01	Bracket, Blower Structure (LH)	3	7
74-35160-01	Bracket, Filler	3	37
74-35161-01	Bracket, Hinged I/O Ground	3	48
74-35210-01	Cover	6	19
74-35212-01	Bracket, Breaker Mounting	9	5
74-35213-01	Shield, AC Input	8	20
74-35214-01	Seal, Front	3	38
74-35215-01	Panel, Front	2	44
74-35215-02	Panel, Front	2	45
74-35369-01	Bezel	1	13
74-35369-01	Bezel	1A	13
74-35370-01	Retainer, Bezel	1A	14
74-35370-01	Retainer, Bezel	1	14
74-35834-01	Bracket, Front Extension	3	11

VAX 6200 SYSTEM SORT BY DEC PART NUMBER

PART NO.	DESCRIPTION	FIG NO.	ITEM NO.
74-35835-01	Bracket, Rear Extension	3	25
74-35843-01	Seal, Right Exhaust	4	39
74-35844-01	Seal, Top Exhaust	4	37
74-35845-01	Seal, Left Exhaust	4	36
74-35846-01	Seal, Bottom Exhaust	4	38
74-35881-01	Cover, Exhaust	4	35
74-35887-01	Cover, Inlet	4	27
74-35919-01	Bracket, Filler Angle Seal	2	63
74-35920-01	Plate, Housing	13	22
74-35922-01	Bracket, Top Housing	13	24
74-35924-01	Plate, Control Panel	13	2
74-35925-01	Plate, Power Filter	13	23
74-35972-01	Panel, Component (120V)	8	1
74-35973-01	Bracket	2	54
74-35974-01	Cover, 6 Watt Regulator	2	53
74-36116-01	Cover Assembly, (LH)	9	1
74-36117-01	Panel, Component (240V)	8	25
74-36257-01	Slug, VAX Name Plate	1	15
74-36257-02	Slug, VAX Name Plate	1A	15
74-36347-01	Bracket, Fuse Box	9	9
74-36349-01	Cover, Retainer Dust	8	15
74-36554-01	Carrier	4	30
74-36670-01	Tape, Foam	11	5
74-36670-02	Tape, Foam	10	6
74-37258-01	Cover, Options	8	29
90-00030-01	Rivet	3	22
90-00030-06	Rivet, Blind Dome	13	18
90-00030-21	Rivet	3	33
90-00049-04	Screw, Sems Truss Phi Hd No. 10-32 x 1/2	2	67
90-00049-04	Screw, Sems Truss Phi Hd No. 10-32 x 3/4	3	3
90-00062-01	Screw, Self-Tap Truss Hd No. 4-40 x 1/4	8	9
90-00062-10	Screw, Self-Tap Truss Hd No. 6-32 x 1/4	8	16
90-00062-10	Screw, Self-Tap Truss Hd No. 6-32 x 1/4	7	3
90-00062-10	Screw, Self-Tap Truss Hd No. 6-32 x 1/4	6	18
90-00062-12	Screw, Self-Tap Truss Hd No. 6-32 x 3/8	9	6
90-00062-12	Screw, Self-Tap Truss Hd No. 6-32 x 3/8	7	6
90-00062-14	Screw, Self-Tap Truss Hd No. 6-32 x 1/2	6	3
90-00062-14	Screw, Self-Tap Truss Hd No. 6-32 x 1/2	8	12
90-00063-39	Screw, Self-Tap Truss Hd No. 10-32 x 1/2	1A	3
90-00063-39	Screw, Self-Tap Truss Hd No. 10-32 x 1/2	2	8
90-00063-39	Screw, Self-Tap Truss Hd No. 10-32 x 1/2	1	3
90-00063-39	Screw, Thread Rolling Pan Hd No. 10 x 1/2	3	12
90-00063-41	Screw, Phi Pan Hd No. 10-32 x 5/8	1A	8
90-00063-41	Screw, Phi Pan Hd No. 10-32 x 5/8	1	8
90-06020-01	Screw, Phi Pan Hd No. 6-32 x 1/4	14	4
90-06021-01	Screw, Phi Pan Hd No. 6-32 x 5/16	15	6
90-06077-01	Screw, Phi Pan Hd No. 10-32 x 1.0	11	9
90-06557-00	Nut, Kep No. 4-40	2	37
90-06560-00	Nut, Kep No. 6-32	11	20
90-06560-00	Nut, Kep No. 6-32	2	47
90-06560-00	Nut, Kep No. 6-32	9	8
90-06560-00	Nut, Kep No. 6-32	4	31
90-06560-00	Nut, Kep No. 6-32	3	49
90-06563-00	Nut, Kep No. 8-32	11	21
90-06563-00	Nut, Kep No. 8-32	10	12

VAX 6200 SYSTEM SORT BY DEC PART NUMBER

PART NO.	DESCRIPTION	FIG NO.	ITEM NO.
90-06563-00	Nut, Kep No. 8-32	4	28
90-06563-00	Nut, Kep No. 8-32	5	14
90-06563-00	Nut, Kep No. 8-32	2	56
90-06565-00	Nut, Kep No. 10-32	13	25
90-06565-00	Nut, Kep No. 10-32	3	9
90-06565-00	Nut, Kep No. 10-32	5	3
90-06565-00	Nut, Hex No. 10-32	6	9
90-06565-00	Nut, Kep No. 10-32	4	4
90-06633-00	Washer, Lock	15	5
90-06633-00	Washer, Lock	14	3
90-06655-00	Washer, Flat	13	17
90-06659-00	Washer, Flat	8	14
90-06660-00	Washer, Flat No. 8	10	11
90-06660-00	Washer, Flat	13	26
90-06660-00	Washer, Flat	11	19
90-06660-00	Washer, Flat	5	13
90-06660-00	Washer, Flat	2	55
90-06660-00	Washer, Flat	4	29
90-06664-00	Washer, Flat	1	7
90-06664-00	Washer, Flat	1A	7
90-06664-00	Washer, Flat	4	5
90-06664-00	Washer, Flat	5	4
90-06664-00	Washer, Flat	6	8
90-06707-00	Washer, Flat Nylon	7	5
90-06709-00	Washer, Flat Nylon	3	53
90-06994-00	Holder, Fuse 3AG Type 15A 250V	7	9
90-07015-00	Grommet, Round Rubber	13	16
90-07031-00	Tie, Cable	10	13
90-07031-00	Tie, Cable	2	31
90-07032-00	Tie, Cable	6	17
90-07035-00	Grommet, Caterpillar	15	8
90-07212-00	Fuse, Slo Blo 3AG 1.0A 250V	8	5
90-07216-00	Fuse, Slo Blo 3AG 2.0A 250V	7	10
90-07651-00	Washer, External Lock	4	6
90-07651-00	Washer, External Tooth Lock	5	16
90-07786-00	Nut, Retainer No. 10-32	3	13
90-07786-00	Retainer, U-Nut No. 10-32	2	9
90-07786-00	Retainer, U-Nut No. 10-32	1	11
90-07786-00	Retainer, U-Nut No. 10-32	1A	11
90-07867-00	Mount, Cable Tie	11	16
90-07880-00	Tie, Cable	13	10
90-07880-00	Tie, Cable	1A	22
90-07880-00	Tie, Cable	1	23
90-08007-02	Screw, Phi Flat Hd No. 10-32 x 1/4	11	7
90-08203-00	Nut, Kep No. 1/4-20	1	5
90-08203-00	Nut, Kep No. 1/4-20	1A	5
90-08203-00	Nut, Kep No. 1/4-20	3	17
90-08390-00	Fuse, Norm Blo 3AG 10A 250V	8	4
90-08451-00	Screw Assembly, Lock	2	26
90-09273-01	Ring, External Retainer	9	4
90-09309-01	Nut, Lock No. 14 x 3/4	8	28
90-09309-02	Nut, Lock No. 1-11 x 1/2	8	19
90-09636-00	Clamp, Cable	2	36
90-09643-02	Screw, Sems Phi Pan Hd No. 4-40 x 1/4	13	7
90-09701-00	Screw, Sems Phi Pan Hd No. 6-32 x 5/16	12	3
90-09718-00	Grommet, Strip	2	61

VAX 6200 SYSTEM SORT BY DEC PART NUMBER

PART NO.	DESCRIPTION	FIG NO.	ITEM NO.
90-09984-00	Screw, Phi Pan Hd No. 6-32 x 3/8	8	32
90-09984-03	Screw, Sems Phi Pan Hd No. 6-32 x 1/2	13	15
90-09984-07	Screw, Sems Phi Pan Hd No. 6-32 x 3/8	11	15
90-09984-07	Screw, Sems Phi Pan Hd No. 6-32 x 5/16	13	8
90-09984-07	Screw, Sems Phi Pan Hd No. 6-32 x 3/8	10	3
90-09984-07	Screw, Sems Phi Pan Hd No. 6-32 x 5/16	2	34
90-09988-00	Screw, Sems Hex Hd No. 1/4-20 x 1/2	3	4
90-09988-00	Screw, Sems Hex Hd No. 1/4-20 x 1/2	2	4
90-09988-08	Screw, Sems Hex Hd No. 8-32 x 3/8	2	14
90-10568-01	Standoff, Module	13	4
90-10586-02	Nut, Kep No. 6-32	8	10
90-10586-02	Nut, Kep No. 6-32	6	4
90-10624-01	Bracket, Mounting	2	33
H405-E	POWER BUS OUTPUT ASSEMBLY (120V)	6	N/A
H405-E	POWER BUS OUTPUT ASSEMBLY (120V)	2	7
H405-F	POWER BUS OUTPUT ASSEMBLY (240V)	2	7
H405-F	POWER BUS OUTPUT ASSEMBLY (240V)	6	N/A
H7206-A	POWER LOGIC BOX ASSEMBLY	12	N/A
H7206-A	POWER LOGIC BOX ASSEMBLY	2	13
H7214-A	REGULATOR ASSEMBLY, 600 WATTS	15	N/A
H7214-A	REGULATOR ASSEMBLY, 600 WATTS	2	66
H7215-A	REGULATOR ASSEMBLY, 300 WATTS	14	N/A
H7215-A	REGULATOR ASSEMBLY, 300 WATTS	2	65
H9400-AF	Card Cage Assembly, VAXBI	11	1
KA62A-AA	Module, CPU	1	20
KA62A-AB	Module, 32MB	1	21
KA62A-AB	Module, CPU	1A	20
N/A	VAX 6200 SYSTEM ASSEMBLY (2BI)	1	N/A
N/A	VAXserver 6200 SYSTEM ASSEMBLY (2BI)	1A	N/A
T1034-00	Module, NI Adapter w/TK50 Controller	1A	17
T1034-00	Module, NI Adapter w/TK50 Controller	1	17
T1043-00	Module, XMI to BI Adapter (XBIB)	1	18
T1043-00	Module, XMI to BI Adapter (XBIB)	1A	18
T2012-00	Module, XMI to BI Adapter (XBIA)	1A	19
T2012-00	Module, XMI to BI Adapter (XBIA)	1	19
TK50-AA	Tape Drive	1	10
TK50-AA	Tape Drive	1A	10

VAX 6200 SYSTEM SORT BY DEC PART DESCRIPTION

DESCRIPTION	DEC PART NO.	FIG. NO.	ITEM
62AMB-YE (120V)	62AMB-YE	1	N/A
62AMB-YJ (240V)	62AMB-YJ	1	N/A
62AMN-YE (208V)	62AMN-YE	1A	N/A
62AMN-YJ (380/415V)	62AMN-YJ	1A	N/A
Battery, 3 Cell 3.75V 0.18MA	12-19245-00	13	12
Bezel	74-35369-01	1A	13
Bezel	74-35369-01	1	13
Bezel Assembly, Control	70-22117-01	13	6
Block, Fuse 3P 5AG Type 30A 600V (240V)	12-25633-01	9	10
Blower, Backward 24 Vdc	12-27848-01	2	18
Bracket	74-35973-01	2	54
Bracket (LH)	74-34408-01	3	30
Bracket (RH)	74-34409-01	3	29
Bracket Assembly, Regulator 300W	70-24169-01	14	1
Bracket Assembly, Regulator 600W	70-24168-01	15	1
Bracket, Blower Structure (LH)	74-35050-01	3	7
Bracket, Blower Structure (RH)	74-35049-01	3	8
Bracket, Breaker Mounting	74-35212-01	9	5
Bracket, Filler	74-35160-01	3	37
Bracket, Filler Angle Seal	74-35919-01	2	63
Bracket, Front Extension	74-35834-01	3	11
Bracket, Front Sensor	74-34752-01	2	29
Bracket, Fuse Box	74-36347-01	9	9
Bracket, Hinged I/O Ground	74-35161-01	3	48
Bracket, Mounting	90-10624-01	2	33
Bracket, Rear Extension	74-35835-01	3	25
Bracket, Top Housing	74-35922-01	13	24
Bus Bar Assembly	12-27676-01	10	2
Bus Bar Assembly, Dual BI	12-28508-01	11	14
BUS BAR ASSEMBLY, XMI	70-24902-01	10	N/A
BUS BAR ASSEMBLY, XMI	70-24902-01	2	2
Bus Bar, -2V Dual BI	12-28345-01	11	10
Bus Bar, -5V Dual BI	12-28342-01	11	11
Bus Bar, Uninsulated	12-27938-01	10	5
Bus Bar, Uninsulated	12-27939-01	10	4
Button, Reset	74-33423-01	13	5
CABINET ASSEMBLY, MECHANICAL	70-24614-01	2	1
CABINET ASSEMBLY, MECHANICAL	70-24614-01	3	N/A
Cable Assembly, 20 Cond	17-01568-02	2	57
Cable Assembly, 4 Cond	17-01567-01	2	25
Cable Assembly, 6 Cond	17-01496-01	2	24
Cable Assembly, Flat	17-01897-02	2	Not Shown
Cable Assembly, Flat (K1J13 to K3J1)	17-01897-03	1	Not Shown
Cable Assembly, Flat (K1J13 to K3J1)	17-01897-03	1A	Not Shown
Cable Assembly, Flat 20 Cond	17-01816-01	13	21
Cable Assembly, Flat 20 Cond	17-01818-01	13	20
Cable Assembly, Flat 26 Cond	17-01817-01	13	19
Cable Assembly, Flat 34 Cond	17-01666-01	2	50
Cable Assembly, Flat 34 Cond	17-01498-01	2	52
Cable Assembly, Flat 34 Cond	17-01497-02	2	51
Cable Assembly, Flat Ribbon	17-00849-08	2	Not Shown
Cable Assembly, Molded Shielded 25 Pin	17-00313-02	1	Not Shown
Cable Assembly, Molded Shielded 25 Pin	17-00313-02	1A	Not Shown
Cable Assembly, w/Wrist Strap	12-24023-01	2	46
Cap Assembly, Connector Shell	12-16734-00	8	13

VAX 6200 SYSTEM SORT BY DEC PART DESCRIPTION

DESCRIPTION	DEC PART NO.	FIG. NO.	ITEM
CARD CAGE ASSEMBLY, DUAL BI	70-24126-01	11	N/A
CARD CAGE ASSEMBLY, DUAL BI	70-24126-01	2	62
Card Cage Assembly, System	70-24373-01	10	1
Card Cage Assembly, VAXBI	H9400-AF	11	1
Carrier	74-36554-01	4	30
Carrier, Fuse 3AG Type 12A 250V	12-21126-03	8	3
CHASSIS ASSEMBLY (120V)	70-25506-01	7	N/A
CHASSIS ASSEMBLY (120V)	70-25506-01	6	1
CHASSIS ASSEMBLY (240V)	70-25506-02	6	1
CHASSIS ASSEMBLY (240V)	70-25506-02	7	N/A
Circuit Breaker, 11A 480V (240V)	12-28412-01	9	2
Circuit Breaker, 20A 240V (120V)	12-25471-02	9	2
Clamp, Cable	90-09636-00	2	36
Clip, Flat Cable	12-15843-01	2	20
Clip, Flat Cable	12-15843-03	2	23
Clip, Nylon For RF Gasket	12-21535-01	2	22
Clip, Nylon For RF Gasket	12-21535-01	3	6
Connector Assembly, D Sub 15 Pin	12-22196-02	1A	Not Shown
Connector Assembly, D Sub 15 Pin	12-22196-02	1	Not Shown
Connector, 1 Pin Mate-N-Lok	12-12169-01	8	7
Connector, 7 Pin	12-11537-00	8	11
Connector, Power Receptacle	12-14157-06	7	8
Contactor, 3P DBL Breaker 30A 600V (120V)	12-11147-00	9	7
Contactor, 3P DBL Breaker 30A 600V (240V)	12-11147-01	9	7
CONTROL ASSEMBLY, SYSTEM	70-24903-01	13	N/A
CONTROL ASSEMBLY, SYSTEM	70-24903-01	2	32
Converter, Input DC-DC 5V @ 300V 120A	54-17005-01	15	4
Cover	74-35210-01	6	19
COVER ASSEMBLY (120V)	70-25505-01	6	13
COVER ASSEMBLY (120V)	70-25505-01	9	N/A
COVER ASSEMBLY (240V)	70-25505-02	9	N/A
COVER ASSEMBLY (240V)	70-25505-02	6	13
Cover Assembly, (LH)	74-36116-01	9	1
Cover Assembly, BI Card Cage	70-24389-01	2	42
Cover Assembly, XMI Card Cage	70-24390-01	2	41
Cover, 6 Watt Regulator	74-35974-01	2	53
Cover, Exhaust	74-35881-01	4	35
Cover, Inlet	74-35887-01	4	27
Cover, Options	74-37258-01	8	29
Cover, Rear	70-24934-01	5	12
Cover, Retainer Dust	74-36349-01	8	15
Cover, Top Weldment	70-23397-01	1A	2
Cover, Top Weldment	70-23397-01	1	2
DOOR ASSEMBLY, FRONT	70-24623-01	4	N/A
DOOR ASSEMBLY, FRONT	70-24623-01	1A	12
DOOR ASSEMBLY, FRONT	70-24623-01	1	12
DOOR ASSEMBLY, REAR	70-24124-01	1	9
DOOR ASSEMBLY, REAR	70-24124-01	5	N/A
DOOR ASSEMBLY, REAR	70-24124-01	1A	9
Extension Assembly, Front	70-24612-01	2	15
Extension Assembly, Rear	70-24613-01	2	16

VAX 6200 SYSTEM SORT BY DEC PART DESCRIPTION

DESCRIPTION	DEC PART NO.	FIG. NO.	ITEM
Fan, Axial 45CFM 24 Vdc	12-24701-06	12	2
Filter, EMI/RFI Line 47-63 Hz	12-26355-02	8	21
Filter, Foam Air	12-11255-22	5	11
Filter, Foam Air	12-11255-17	5	10
Filter, Foam Air	12-11255-24	4	26
Filter, Foam Air	12-11255-25	4	22
Filter, Foam Air	12-11255-23	4	34
Filter, Line	12-25185-02	7	2
Filter, Power Bus	12-21099-02	8	8
Filter, Power Line	12-26306-02	7	2
Frame Assembly, 1.5 Bay	70-24742-02	3	1
Frame Assembly, Full Width Hinged	70-24618-01	3	40
Fuse, 30A 600V (240V)	12-22573-02	9	11
Fuse, Norm Blo 3AG 10A 250V	90-08390-00	8	4
Fuse, Norm Blo 5AG 8.0A 600V	12-17199-02	15	7
Fuse, Slo Blo 3AG 1.0A 250V	90-07212-00	8	5
Fuse, Slo Blo 3AG 2.0A 250V	90-07216-00	7	10
Gasket Assembly	70-19605-26	3	15
Gasket Assembly	70-19605-08	3	14
Gasket Assembly	70-19605-13	3	50
Gasket Assembly	70-19605-20	3	51
Gasket Assembly	70-19605-30	3	31
Gasket Assembly	70-19605-01	2	64
Gasket Assembly	70-19605-02	2	21
Gasket Assembly	70-19605-11	3	19
Gasket Assembly	70-19605-06	3	5
Gasket Assembly	70-19605-04	3	27
Gasket, BECU	12-28686-12	5	6
Gasket, RFI Shield	12-28686-10	8	22
Gasket, RFI Shield	12-28686-08	8	23
Gasket, RFI Shield	12-28686-15	8	24
Gasket, RFI Shield	12-28686-02	4	12
Gasket, RFI Shield	12-28686-10	3	45
Gasket, RFI Shield	12-28686-11	3	47
Gasket, RFI Shield	12-28686-14	4	33
Gasket, RFI Shield	12-28686-03	4	13
Gasket, RFI Shield	12-28686-09	4	19
Gasket, RFI Shield	12-28686-11	4	21
Gasket, RFI Shield	12-28686-07	4	17
Gasket, RFI Shield	12-28686-06	4	16
Gasket, RFI Shield	12-28686-01	3	46
Gasket, RFI Shield	12-28686-16	2	11
Gasket, RFI Shield	12-28686-04	4	14
Gasket, RFI Shield	12-28686-14	2	12
Gasket, RFI Shield	12-28686-07	3	44
Gasket, RFI Shield	12-28686-10	4	20
Gasket, RFI Shield	12-28686-05	4	15
Gasket, RFI Shield	12-28686-13	4	32
Gasket, RFI Shield	12-28686-08	4	18
Gasket, RFI Shield	12-28686-17	2	10
Grommet	12-25469-01	2	17
Grommet, Caterpillar	90-07035-00	15	8
Grommet, Round Rubber	90-07015-00	13	16
Grommet, Strip	90-09718-00	2	61

VAX 6200 SYSTEM SORT BY DEC PART DESCRIPTION

DESCRIPTION	DEC PART NO.	FIG. NO.	ITEM
Harness Assembly	17-01815-01	2	6
Harness Assembly, 5 Cond	17-01549-01	2	43
Harness Assembly, Wire	17-01501-01	2	5
Harness Assembly, Wire	17-01458-01	2	60
Harness Assembly, Wire	17-01662-01	2	59
Harness Assembly, Wire	17-01499-01	2	35
Harness Assembly, Wire (J2)	17-01805-01	6	2
Harness Assembly, Wire (J2)	17-01803-01	6	2
Harness Assembly, Wire (J7, J8, J17)	17-01445-01	12	7
Harness Assembly, Wire (P10)	17-01877-01	6	6
Harness Assembly, Wire (P3)	17-01807-01	6	5
Harness Assembly, Wire (P3)	17-01804-01	6	5
Harness Assembly, Wire 04 Cond	17-01525-01	11	18
Harness Assembly, Wire 04 Cond	17-01525-01	10	Not Shown
Harness Assembly, Wire 10 Cond	17-01808-01	6	15
Harness Assembly, Wire 15 Cond	17-01566-01	10	Not Shown
Harness Assembly, Wire 2 Cond	17-01663-01	15	3
Harness Assembly, Wire 2 Cond Quick-Disconnect	17-01846-01	6	12
Harness Assembly, Wire 26 Cond	17-01523-01	11	17
Harness Assembly, Wire 26 Cond	17-01814-01	2	68
Harness Assembly, Wire 3 Cond	17-01811-01	6	14
Harness Assembly, Wire 4 Cond	17-01810-01	6	16
Harness Assembly, Wire 4 Cond	17-01844-01	2	40
Harness Assembly, Wire 4 Cond	17-01447-01	2	39
Harness Assembly, Wire 4 Cond 10 Pin	17-01569-01	2	49
Harness Assembly, Wire 4 Cond 2 Pin	17-01833-01	2	48
Harness Assembly, Wire 5 Conductor	17-01806-01	8	18
10AWG Power CordHarness Assembly, Wire 5 Conductor	17-01295-01	8	26
12AWG Power CordHarness Assembly, Wire 6 Cond	17-01446-01	2	38
Harness Assembly, Wire 9 Cond	17-01570-01	2	19
Header, PCB 26 Pin	12-28804-01	13	13
Hinge Assembly (LH)	12-20203-01	4	3
Hinge, Pull (LH)	12-20203-01	5	2
Holder, Battery Pack	74-33477-01	13	11
Holder, Fuse 3AG Type 12A 250V	12-21126-01	8	2
Holder, Fuse 3AG Type 15A 250V	90-06994-00	7	9
Holder, Fuse 5AG Type 30A 600V	12-27980-01	15	2
Housing Assembly	70-24418-01	13	1
 I/O Assembly, Lower	 70-24610-01	 3	 41
 Jumper Assembly	 12-28344-01	 11	 13
Jumper Assembly	17-01149-01	2	Not Shown
Jumper Assembly (Red)	17-01845-01	6	10
Jumper Assembly (Yellow)	17-01845-02	6	11
Jumper, Bus Bar -5.2V	12-28343-01	11	12
Key, Button	74-14318-00	3	54
Key, Cabinet	12-26339-01	1A	Not Shown
Key, Cabinet	12-26339-01	1	Not Shown
Keys, Plastic	12-17119-01	1A	21
Keys, Plastic	12-17119-01	1	22

VAX 6200 SYSTEM SORT BY DEC PART DESCRIPTION

DESCRIPTION	DEC PART NO.	FIG. NO.	ITEM
Label	36-27921-01	6	Not Shown
Label, "Blank"	36-27921-01	14	6
Label, "CSI"	36-27922-01	14	6
Label, "Kapton Blank"	36-27920-01	14	6
Label, "Serial/Power USA UR/CSA"	36-17674-46	14	5
Label, "Assembly"	36-18307-05	1A	Not Shown
Label, "Assembly"	36-18307-05	1	Not Shown
Label, "Bar Code"	36-22147-06	2	Not Shown
Label, "Black"	36-27922-01	6	Not Shown
Label, "Blank"	36-27921-01	12	Not Shown
Label, "Blank"	36-27921-01	15	Not Shown
Label, "Blank"	36-27920-01	6	Not Shown
Label, "Control Panel"	36-23595-02	2	Not Shown
Label, "Control Panel"	36-23595-02	2	Not Shown
Label, "CSI"	36-27922-01	15	Not Shown
Label, "CSI"	36-27922-01	12	Not Shown
Label, "Direct Thermal"	36-28231-08	1A	Not Shown
Label, "Direct Thermal"	36-28231-08	1	Not Shown
Label, "FCC Class A Processor"	36-17880-02	1A	Not Shown
Label, "FCC Class A Processor"	36-17880-02	1	Not Shown
Label, "Fuse Replacement"	36-26213-01	6	Not Shown
Label, "Fuse Warning"	36-25176-01	6	Not Shown
Label, "Fuse Warning" (French/English)	36-26214-01	6	Not Shown
Label, "Ground Symbol"	36-12680-02	2	Not Shown
Label, "Ground"	36-13272-00	5	17
Label, "Ground"	36-12680-02	1	6
Label, "Ground"	36-12680-02	1A	6
Label, "Ground"	36-13272-00	4	8
Label, "H405-E"	36-26181-03	6	Not Shown
Label, "H405-F"	36-26181-04	6	Not Shown
Label, "Kapton Blank"	36-27920-01	12	Not Shown
Label, "PTT Approval"	36-25988-02	1	Not Shown
Label, "PTT Approval"	36-25988-02	1A	Not
ShownLabel, "Serial/ Power"	36-17674-00	2	Not Shown
Label, "Serial/Power Ireland"	36-17674-58	15	Not Shown
Label, "Serial/Power Rating"	36-26211-10	6	Not Shown
Label, "Serial/Power Rating"	36-26211-11	6	Not Shown
Label, "Serial/Power Rating" (Ireland)	36-26211-12	6	Not Shown
Label, "Serial/Power USA UR/CSA"	36-17674-46	15	Not Shown
Label, "Serial/Power"	36-17674-46	12	Not Shown
Label, "System Electrical Data 120V"	36-25189-02	1A	Not Shown
Label, "System Electrical Data 120V"	36-25189-02	1	Not Shown
Label, "System Electrical Data 240V"	36-25189-01	1A	Not Shown
Label, "System Electrical Data 240V"	36-25189-01	1	Not Shown
Label, "Warning"	36-27020-01	1	Not Shown
Label, "Warning"	36-27020-01	1A	Not Shown
Lamp, White Lens Panel 125V	12-05303-01	8	6
Latch, Turn-Grip	12-24095-01	5	5
Latch, Turn-Grip	12-24095-01	4	2
Logo, Corporate	74-31616-02	1	16
Logo, Corporate	74-31616-02	1A	16

VAX 6200 SYSTEM SORT BY DEC PART DESCRIPTION

DESCRIPTION	DEC PART NO.	FIG. NO.	ITEM
Module, 32MB	KA62A-AB	1	21
Module, AC Control	54-15690-00	7	4
Module, AC Input/Fan Drive	54-18169-01	12	4
Module, AC Input/Logic	54-17007-01	12	5
Module, Clock Arbiter	54-18172-01	2	58
Module, Control Panel	54-16574-01	13	3
Module, CPU	KA62A-AA	1	20
Module, CPU	KA62A-AB	1A	20
Module, Isolation	20-28124-02	7	7
Module, NI Adapter w/TK50 Controller	T1034-00	1	17
Module, NI Adapter w/TK50 Controller	T1034-00	1A	17
Module, Output Filter	20-28997-01	13	9
Module, Timing Control XTC XMI	20-29176-01	13	14
Module, XMI to BI Adapter (XBIA)	T2012-00	1A	19
Module, XMI to BI Adapter (XBIA)	T2012-00	1	19
Module, XMI to BI Adapter (XBIB)	T1043-00	1	18
Module, XMI to BI Adapter (XBIB)	T1043-00	1A	18
Mount, Cable Tie	90-07867-00	11	16
Nut, Hex No. 10-32	90-06565-00	6	9
Nut, Kep No. 1/4-20	90-08203-00	3	17
Nut, Kep No. 1/4-20	90-08203-00	1	5
Nut, Kep No. 1/4-20	90-08203-00	1A	5
Nut, Kep No. 10-32	90-06565-00	13	25
Nut, Kep No. 10-32	90-06565-00	5	3
Nut, Kep No. 10-32	90-06565-00	3	9
Nut, Kep No. 10-32	90-06565-00	4	4
Nut, Kep No. 4-40	90-06557-00	2	37
Nut, Kep No. 6-32	90-10586-02	8	10
Nut, Kep No. 6-32	90-06560-00	9	8
Nut, Kep No. 6-32	90-06560-00	11	20
Nut, Kep No. 6-32	90-10586-02	6	4
Nut, Kep No. 6-32	90-06560-00	3	49
Nut, Kep No. 6-32	90-06560-00	2	47
Nut, Kep No. 6-32	90-06560-00	4	31
Nut, Kep No. 8-32	90-06563-00	5	14
Nut, Kep No. 8-32	90-06563-00	10	12
Nut, Kep No. 8-32	90-06563-00	11	21
Nut, Kep No. 8-32	90-06563-00	4	28
Nut, Kep No. 8-32	90-06563-00	2	56
Nut, Lock No. 1-11 x 1/2	90-09309-02	8	19
Nut, Lock No. 14 x 3/4	90-09309-01	8	28
Nut, Retainer No. 10-32	90-07786-00	3	13
Panel (RH)	74-34410-10	3	26
PANEL ASSEMBLY, COMPONENT (120V)	70-25507-01	6	7
PANEL ASSEMBLY, COMPONENT (120V)	70-25507-01	8	N/A
PANEL ASSEMBLY, COMPONENT (240V)	70-25507-02	6	7
PANEL ASSEMBLY, COMPONENT (240V)	70-25507-02	8	N/A
Panel Assembly, End	70-19485-01	1A	4
Panel Assembly, End	70-19485-01	1	4
Panel, Component (120V)	74-35972-01	8	1
Panel, Component (240V)	74-36117-01	8	25
Panel, Double Sub	74-26407-01	1	Not Shown

VAX 6200 SYSTEM SORT BY DEC PART DESCRIPTION

DESCRIPTION	DEC PART NO.	FIG. NO.	ITEM ¹
Panel, Double Sub	74-26407-01	1A	Not Shown
Panel, Front	74-35215-02	2	45
Panel, Front	74-35215-01	2	44
Panel, I/O Blower	74-35004-01	2	28
Plane Assembly, Ground	70-24409-01	3	39
Plate, BI Mounting (LH)	74-34762-02	11	8
Plate, BI Mounting (RH)	74-34762-01	11	6
Plate, Control Panel	74-35924-01	13	2
Plate, H7206 Mounting	74-34982-01	3	35
Plate, Housing	74-35920-01	13	22
Plate, Power Filter	74-35925-01	13	23
Plate, XMI Mounting (LH)	74-34763-02	10	10
Plate, XMI Mounting (RH)	74-34763-01	10	9
Plug, Node ID No. 1	12-23701-01	11	Not Shown
Plug, Node ID No. 2	12-23701-02	11	Not Shown
Plug, Node ID No. 3	12-23701-03	11	Not Shown
Plug, Node ID No. 4	12-23701-04	11	Not Shown
Plug, Node ID No. 5	12-23701-05	11	Not Shown
Plug, Node ID No. 6	12-23701-06	11	Not Shown
POWER & PACKAGING ASSEMBLY (14 Slot, 120V)	70-24900-01	1A	1
POWER & PACKAGING ASSEMBLY (14 Slot, 120V)	70-24900-01	1	1
POWER & PACKAGING ASSEMBLY (14 Slot, 240V)	70-24900-02	1	1
POWER & PACKAGING ASSEMBLY (14 Slot, 240V)	70-24900-02	1A	1
POWER AND PACKAGING ASSEMBLY (120V)	70-24900-01	2	N/A
POWER AND PACKAGING ASSEMBLY (240V)	70-24900-02	2	N/A
POWER BUS OUTPUT ASSEMBLY (120V)	H405-E	6	N/A
POWER BUS OUTPUT ASSEMBLY (120V)	H405-E	2	7
POWER BUS OUTPUT ASSEMBLY (240V)	H405-F	6	N/A
POWER BUS OUTPUT ASSEMBLY (240V)	H405-F	2	7
Power Supply, -2.0V -5.25V +12.0V -12.0V	54-16977-01	14	2
POWER/LOGIC BOX ASSEMBLY	H7206-A	12	N/A
POWER/LOGIC BOX ASSEMBLY	H7206-A	2	13
Rail, Third Support	74-34756-01	3	2
REGULATOR ASSEMBLY, 300 WATTS	H7215-A	14	N/A
REGULATOR ASSEMBLY, 300 WATTS	H7215-A	2	65
REGULATOR ASSEMBLY, 600 WATTS	H7214-A	15	N/A
REGULATOR ASSEMBLY, 600 WATTS	H7214-A	2	66
Relief, Power Cord Strain	12-14574-00	8	17
Relief, Power Cord Strain	12-14574-03	8	27
Retainer, Bezel	74-35370-01	1	14
Retainer, Bezel	74-35370-01	1A	14
Retainer, U-Nut No. 10-32	90-07786-00	1A	11
Retainer, U-Nut No. 10-32	90-07786-00	1	11
Retainer, U-Nut No. 10-32	90-07786-00	2	9
Ring, External Retainer	90-09273-01	9	4
Rivet	90-00030-01	3	22
Rivet	90-00030-21	3	33
Rivet, Blind Dome	90-00030-06	13	18
Rod, Actuator	74-32259-01	9	3

VAX 6200 SYSTEM SORT BY DEC PART DESCRIPTION

DESCRIPTION	DEC PART NO.	FIG. NO.	ITEM
Screen, Bottom	74-33015-01	3	32
Screw Assembly, Lock	90-08451-00	2	26
Screw, Phi Flat Hd No. 10-32 x 1/4	90-08007-02	11	7
Screw, Phi Pan Hd No. 10-32 x 1.0	90-06077-01	11	9
Screw, Phi Pan Hd No. 10-32 x 5/8	90-00063-41	1A	8
Screw, Phi Pan Hd No. 10-32 x 5/8	90-00063-41	1	8
Screw, Phi Pan Hd No. 6-32 x 1/4	90-06020-01	14	4
Screw, Phi Pan Hd No. 6-32 x 3/8	90-09984-00	8	32
Screw, Phi Pan Hd No. 6-32 x 5/16	90-06021-01	15	6
Screw, Self-Tap Truss Hd No. 10-32 x 1/2	90-00063-39	1	3
Screw, Self-Tap Truss Hd No. 10-32 x 1/2	90-00063-39	1A	3
Screw, Self-Tap Truss Hd No. 10-32 x 1/2	90-00063-39	2	8
Screw, Self-Tap Truss Hd No. 4-40 x 1/4	90-00062-01	8	9
Screw, Self-Tap Truss Hd No. 6-32 x 1/2	90-00062-14	6	3
Screw, Self-Tap Truss Hd No. 6-32 x 1/2	90-00062-14	8	12
Screw, Self-Tap Truss Hd No. 6-32 x 1/4	90-00062-10	6	18
Screw, Self-Tap Truss Hd No. 6-32 x 1/4	90-00062-10	8	16
Screw, Self-Tap Truss Hd No. 6-32 x 1/4	90-00062-10	7	3
Screw, Self-Tap Truss Hd No. 6-32 x 3/8	90-00062-12	7	6
Screw, Self-Tap Truss Hd No. 6-32 x 3/8	90-00062-12	9	6
Screw, Sems Hex Hd No. 1/4-20 x 1/2	90-09988-00	2	4
Screw, Sems Hex Hd No. 1/4-20 x 1/2	90-09988-00	3	4
Screw, Sems Hex Hd No. 8-32 x 3/8	90-09988-08	2	14
Screw, Sems Phi Pan Hd No. 4-40 x 1/4	90-09643-02	13	7
Screw, Sems Phi Pan Hd No. 6-32 x 1/2	90-09984-03	13	15
Screw, Sems Phi Pan Hd No. 6-32 x 3/8	90-09984-07	10	3
Screw, Sems Phi Pan Hd No. 6-32 x 3/8	90-09984-07	11	15
Screw, Sems Phi Pan Hd No. 6-32 x 5/16	90-09701-00	12	3
Screw, Sems Phi Pan Hd No. 6-32 x 5/16	90-09984-07	13	8
Screw, Sems Phi Pan Hd No. 6-32 x 5/16	90-09984-07	2	34
Screw, Sems Truss Phi Hd No. 10-32 x 1/2	90-00049-04	2	67
Screw, Sems Truss Phi Hd No. 10-32 x 3/4	90-00049-04	3	3
Screw, Shoulder No. 10-32 x 1/8	12-27250-01	3	52
Screw, Thread Rolling Pan Hd No. 10 x 1/2	90-00063-39	3	12
Seal, Angle Weldment	70-24621-01	3	18
Seal, Bottom Air	74-34536-03	10	8
Seal, Bottom Air	74-34536-02	11	3
Seal, Bottom Exhaust	74-35846-01	4	38
Seal, Front	74-35214-01	3	38
Seal, Front Angle Single	74-35039-01	3	16
Seal, Right Exhaust	74-35843-01	4	39
Seal, Top Air	74-34536-01	11	4
Seal, Top Air	74-34536-01	10	7
Seal, Top Exhaust	74-35844-01	4	37
Sensor, Air Flow Temp	12-25024-11	2	30
Shield, AC Input	74-35213-01	8	20
Shield, PC Module	74-34053-01	12	6
Shield, RFI	12-28686-02	5	7
Shield, Spring	74-26925-01	3	34
Slug, VAX Name Plate	74-36257-01	1	15
Slug, VAX Name Plate	74-36257-02	1A	15
Spacer	74-33319-01	11	2
Standoff, Module	90-10568-01	13	4
Stiffener, Horizontal	74-35042-01	4	25

VAX 6200 SYSTEM SORT BY DEC PART DESCRIPTION

DESCRIPTION	DEC PART NO.	FIG. NO.	ITEM
Strap, Ground	12-13756-09	5	15
Strap, Ground	12-13756-07	4	7
Strip	74-13707-03	5	8
Strip	74-13707-07	5	9
Strip	74-13707-00	4	24
Strip, Contact	12-28434-07	8	30
Strip, Contact	12-28434-06	8	31
Strip, Contact 0.465 Inches Long	12-28434-08	4	11
Strip, Contact 2.66 Inches Long	12-28434-06	4	9
Strip, Contact 3.465 Inches Long	12-28434-07	4	10
Strip, Left and Right	74-13707-01	4	23
Structure Assembly, Blower	70-24611-01	3	10
Support, H7206 Rear	74-34110-01	3	36
Tape Drive	TK50-AA	1	10
Tape Drive	TK50-AA	1A	10
Tape, Foam	74-36670-02	10	6
Tape, Foam	74-36670-01	11	5
Tie, Cable	90-07032-00	6	17
Tie, Cable	90-07880-00	13	10
Tie, Cable	90-07031-00	10	13
Tie, Cable	90-07031-00	2	31
Tie, Cable	90-07880-00	1	23
Tie, Cable	90-07880-00	1A	22
Transformer, 3-Phase P=416 50 Hz 4.5 kVA	16-28393-01	2	3
Tray Assembly	70-24136-01	3	28
Tube, Weldment	70-24391-01	3	24
VAX 6200 SYSTEM ASSEMBLY (2BI)	N/A	1	N/A
VAXserver 6200 SYSTEM ASSEMBLY (2BI)	N/A	1A	N/A
Washer, External Lock	90-07651-00	4	6
Washer, External Tooth Lock	90-07651-00	5	16
Washer, Flat	90-06660-00	13	26
Washer, Flat	90-06659-00	8	14
Washer, Flat	90-06660-00	5	13
Washer, Flat	90-06660-00	11	19
Washer, Flat	90-06664-00	6	8
Washer, Flat	90-06664-00	5	4
Washer, Flat	90-06655-00	13	17
Washer, Flat	90-06664-00	1	7
Washer, Flat	90-06664-00	1A	7
Washer, Flat	90-06660-00	2	55
Washer, Flat	90-06664-00	4	5
Washer, Flat	90-06660-00	4	29
Washer, Flat No. 8	90-06660-00	10	11
Washer, Flat Nylon	90-06707-00	7	5
Washer, Flat Nylon	90-06709-00	3	53
Washer, Lock	90-06633-00	14	3
Washer, Lock	90-06633-00	15	5
Weldment, Cable Guide	70-25525-01	2	27
Weldment, Cage	70-24410-01	3	20
Weldment, Chassis	70-24635-01	7	1
Weldment, Chassis (BI)	70-24616-01	3	23
Weldment, Chassis (XMI)	70-24615-01	3	21
Weldment, Front Door	70-24622-01	4	1
Weldment, H7206	70-23953-01	12	1
Weldment, Rear Door	70-24125-01	5	1
Weldment, Rear Switch Angle Seal	70-19581-02	3	42